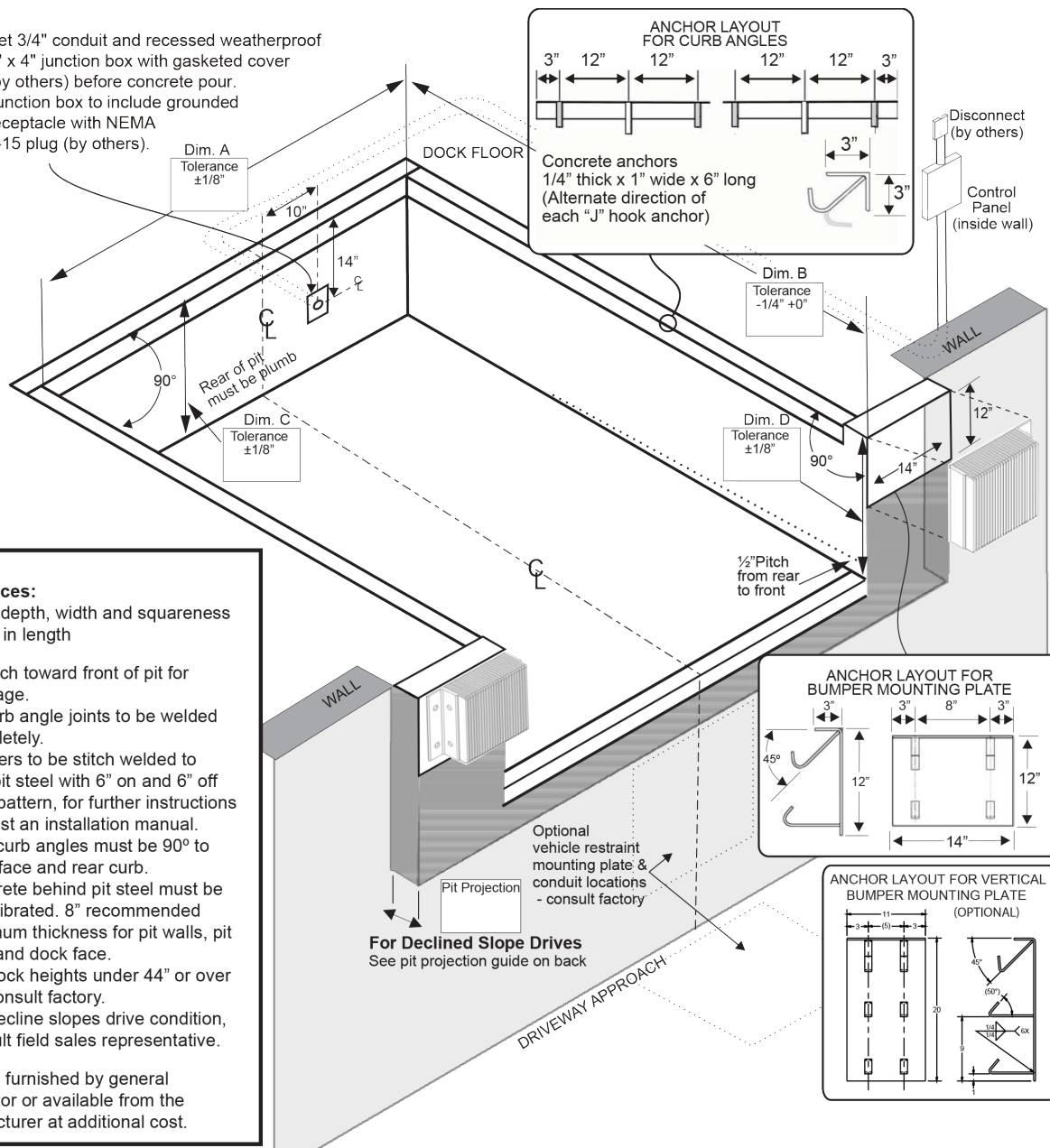


# NOVA DOCK LEVELERS

## AIR POWERED DOCK LEVELER PIT DETAIL

Set 3/4" conduit and recessed weatherproof 4" x 4" junction box with gasketed cover (by others) before concrete pour. Junction box to include grounded receptacle with NEMA 5-15 plug (by others).



Customer:	<b>Certified For Construction</b>
Job:	By:
Location:	Date:
Qty:	Company:
Model/Size:	City & State:
Capacity:	Voltage/Phase:
Represented By:	Drawing#:
Sales Representative:	



# NOVA DOCK LEVELERS

## AIR POWERED DOCK LEVELER PIT DETAIL

Pit dimensional tolerances are  $\pm \frac{1}{8}$ " depth, width and squareness.  $-\frac{1}{4}$ " +0" in length. Nova Technology International, LLC assume no liability for deviations beyond this tolerance.

Dimensions below are for NAS series air powered pit style levelers.								
	Contractors Bill of Material				Nominal Pit Dimensions			
	Curb Angles $\frac{1}{4}$ " x 3" x 3"			Mounting Plates $\frac{1}{4}$ " Thick	Dim. "A" Width	Dim. "B" Length	Dim. "C" Depth (rear)	Dim. "D" Depth (Front)
	Front (Qty 1)	Rear (Qty 1)	Side (Qty 2)	Bumper Plates (Qty 2)				
6' x 6'	74"	80"	60"	3" x 12" x 14"	74"	63"	19½"	20"
6.5' x 6'	80"	86"	60"	3" x 12" x 14"	80"	63"	19½"	20"
7' x 6'	85"	91"	60"	3" x 12" x 14"	85"	63"	19½"	20"
6' x 8'	74"	80"	84"	3" x 12" x 14"	74"	87"	19½"	20"
6.5' x 8'	80"	86"	84"	3" x 12" x 14"	80"	87"	19½"	20"
7' x 8'	85"	91"	84"	3" x 12" x 14"	85"	87"	19½"	20"
6' x 10'	74"	80"	108"	3" x 12" x 14"	74"	111"	19½"	20"
6.5' x 10'	80"	86"	108"	3" x 12" x 14"	80"	111"	19½"	20"
7' x 10'	85"	91"	108"	3" x 12" x 14"	80"	111"	19½"	20"

### Optional Bumper Plates - in lieu of above

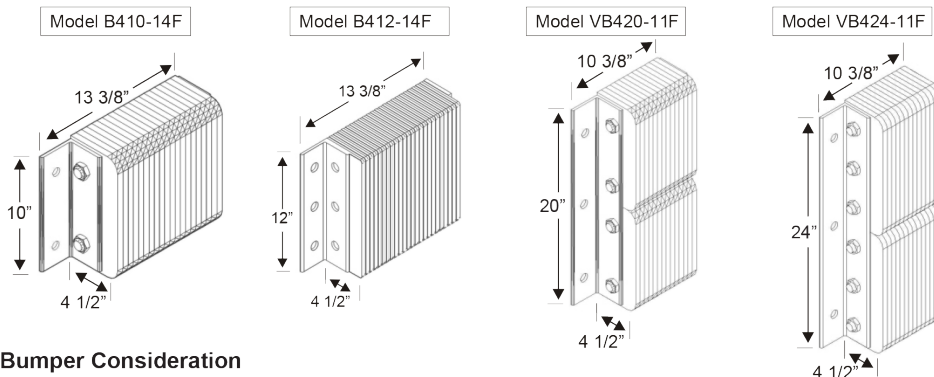
- ☐ 3" x 11" wide x 20" high (Qty 2)
- ☐ 3" x 11" wide x 24" high (Qty 2)
- ☐ Other Bumper Embed \_\_\_\_\_ (Qty 2)

### Pit Projection Guide for Decline Slope Driveways

Percentage of Grade =	Rise of Driveway Driveway Length	% of Driveway Grade	0%	1%	2%	3%	4%	5%	6%	7%	8%	9%	10%
		Pit Projection *Excludes Bumper Projection	0"	3"	4"	5"	6"	7"	8"	9"	10"	11"	12"

**Note:** Projection of pit may require modifications to seals and shelters. Coordinate with supplier if required.

### Bumper Layout



### Bumper Consideration

- ☐ 2 Model B410-14F laminated bumpers  
**Standard on NAS**
- ☐ Optional - 6" Projection
- ☐ Optional - Steel Face
- ☐ 2 Model B412-14F laminated bumpers
- ☐ Optional - 6" Projection
- ☐ Optional - Steel Face
- ☐ 2 Model VB420-11F laminated bumpers
- ☐ Optional - 6" Projection
- ☐ Optional - Steel Face
- ☐ 2 Model VB424-11F laminated bumpers
- ☐ Optional - 6" Projection
- ☐ Optional - Steel Face
- ☐ Other Bumper: \_\_\_\_\_

