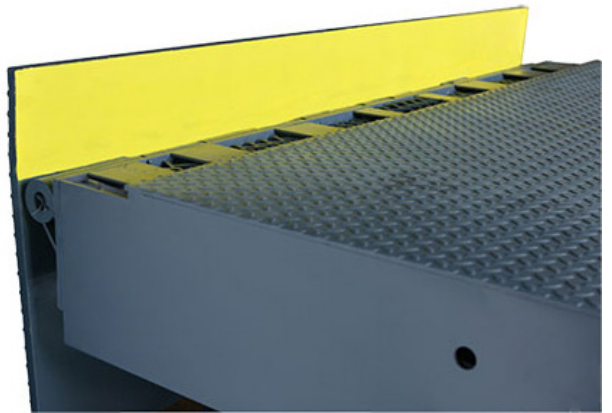


NOVA BARRIER LIP LEVELER

LOADING DOCK SAFETY BARRIER

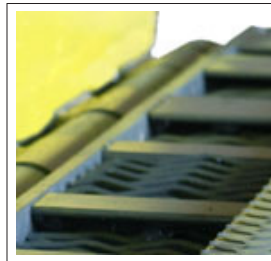
NOVA's Barrier Lip Leveler prevents forklifts from driving off the edge of the dock. The 5-7" tall barrier extends the width of the leveler and can stop a 10,000-pound forklift traveling at 4 miles per hour. It offers protection while at dock level in a stored, cross-traffic position and below dock for end loading operations.

- Increases safety and prevents forklift roll-off at vacant docks
- Automatically recycles to the stored position in the event of premature truck departure
- Establishes a smooth transition between the trailer bed and leveler platform
- Single push-button control for the leveler and lip
- High-visibility yellow paint is standard for added safety and a visual guide
- Includes a 5-year warranty



An Essential Safety Feature for Hydraulic and Air Powered Levelers

The NOVA Barrier Lip is offered in capacities of 35,000 pounds or greater on all sizes of NHS Hydraulic Dock Levelers and 8' or 10' NAS Air Powered Dock Levelers. Barriers are available in 5" or 7" heights, spanning the width of the leveler for maximum protection.



Expanded Metal Grid Prevents Debris Buildup

While in the stored position, an exposed metal grid allows debris to fall into the pit to keep the leveler platform clean and unobstructed.



Enhanced Protection At and Below Dock

Unlike competitor models that are only functional while stored at dock level, the NOVA Barrier Lip remains effective below dock for safer end loading.



Safer, Easier and More Precise Operating

The NOVA Barrier Lip can be outfitted with any of the optional features offered on our hydraulic or air-powered levelers, including a single push-button activation, IntelliDock Combination Control Panel, Auto Return to dock function, independent lip control, an emergency stop button and more!

