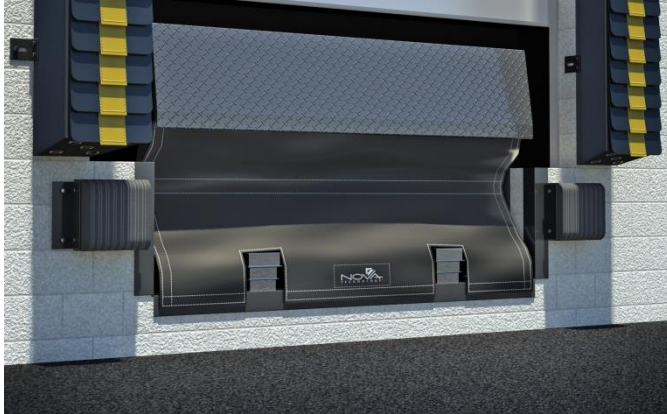


NOVA DLC DOCK LEVELER CURTAIN

EQUIPMENT SPECIFICATIONS



Cover:

- 22 oz. Vinyl
- Durable
- High Chemical Resistance
- Excellent Weathering

Stays:

- Fiberglass Laminate

Retract via bungee cord.

Date _____

End User _____

Address _____

City _____

State _____ Zip _____

Rep _____

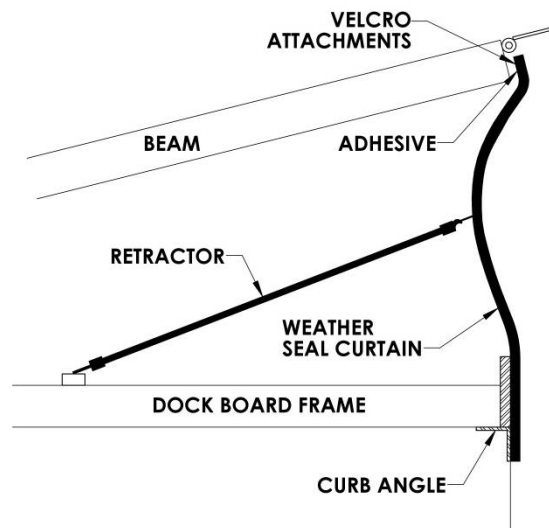
Seal to Fit Model No. _____

Hydraulic Mechanical

Leveler Width _____

Leveler Depth (Height) _____

Of Units to be fitted _____



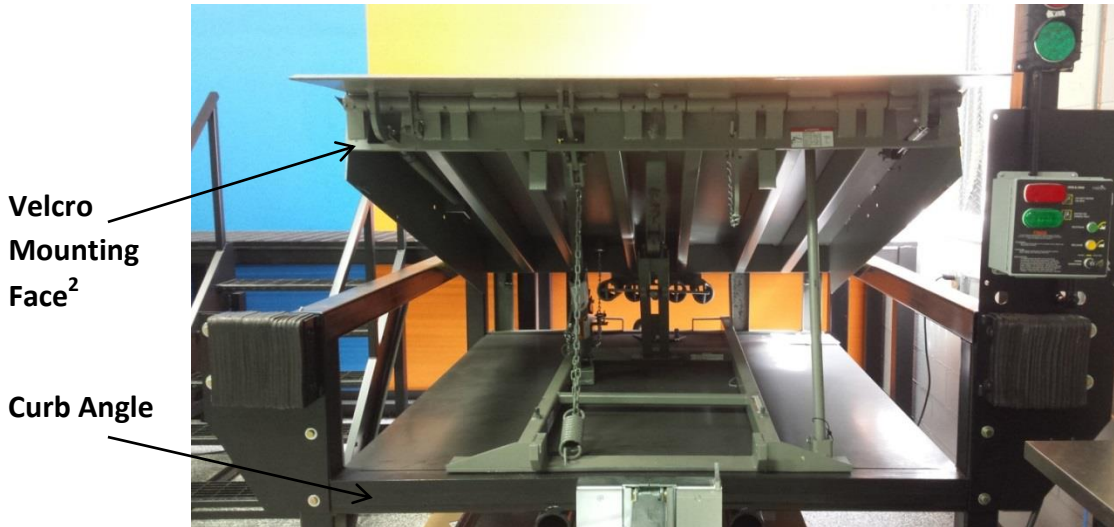
 DANGER

If any Safety Labels will be obstructed by permanently affixed components of the Dock Leveler Curtain, contact the Original Equipment Manufacturer (OEM) to obtain replacement Safety Labels. Install the OEM Safety Labels in an adjacent visible area.

NOVA DLC DOCK LEVELER CURTAIN

EXAMPLE OF REQUIRED CUSTOM DRAWING

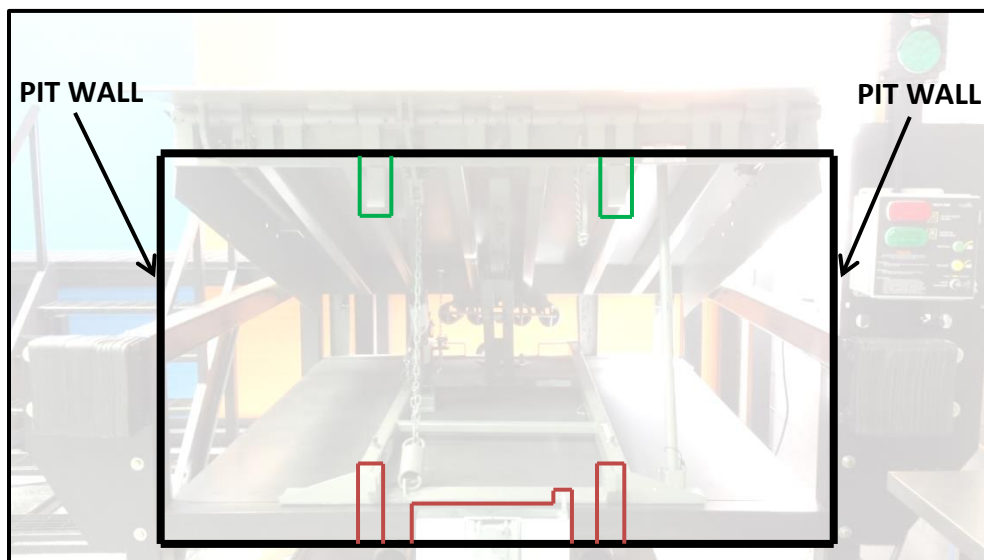
Step 1: Take a front-view picture of the leveler in its open position¹:



Step 2: Find the overall perimeter needed for mounting the curtain (black lines in this example). Overall width is measured between the pit walls².

Step 3: Determine all sections that need cutouts on the curtain (red lines in this example), including restraints, lip keepers, etc.

Step 4: Note the location of any dock leveler safety legs (green lines in this example) or other places needing reinforcement patches.

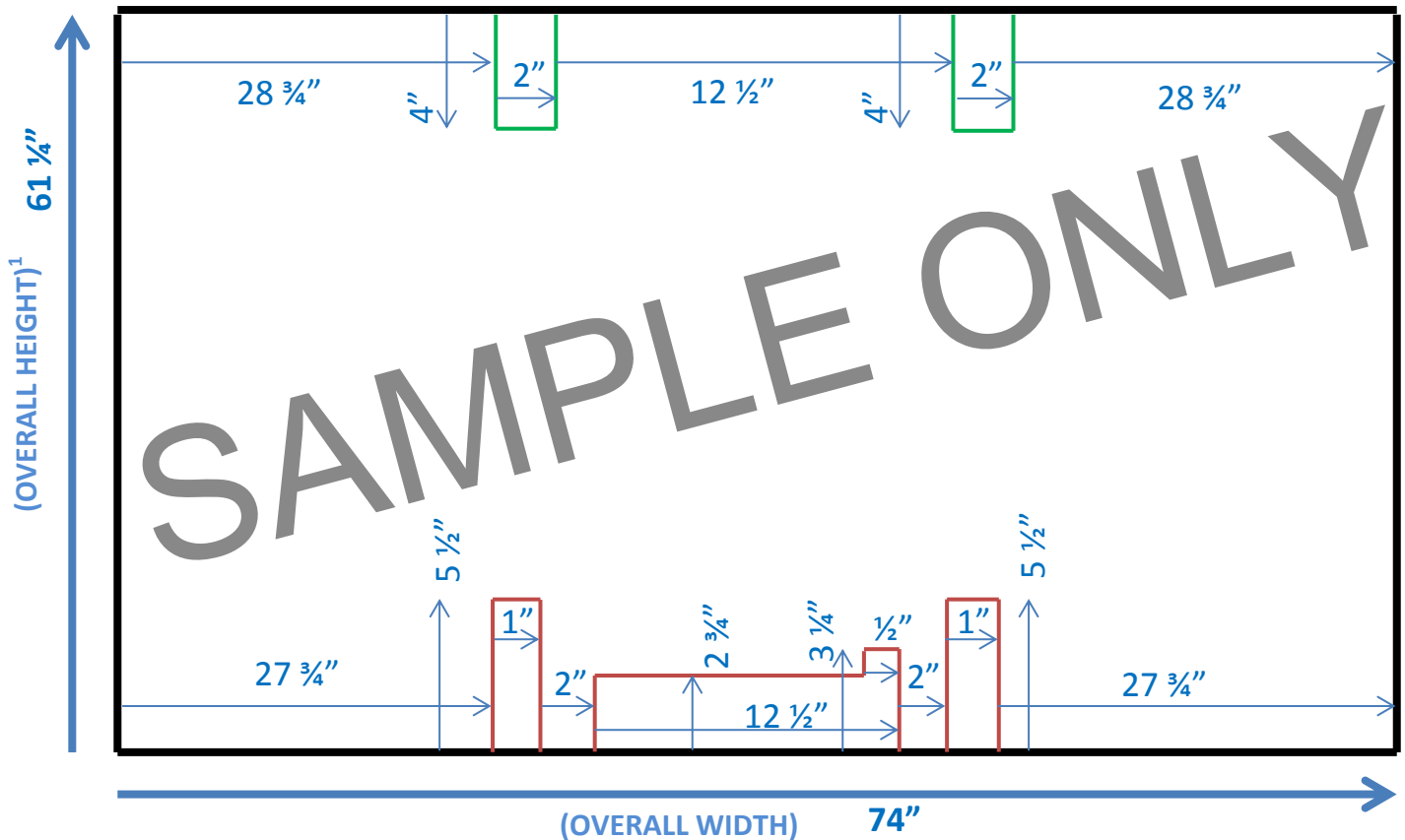


NOVA DLC DOCK LEVELER CURTAIN

EXAMPLE OF REQUIRED CUSTOM DRAWING (CONTINUED)

Step 5: Inside the border box provided, draw any cutouts that are needed in the curtain (red lines in this example) and any reinforcement patches needed (green lines in this example).

Step 6: Going from left to right, write down all the measurements between each feature (blue arrows with sample dimensions in this example). Also show the "height" of each feature. Measure in increments of $\frac{1}{4}$ ".



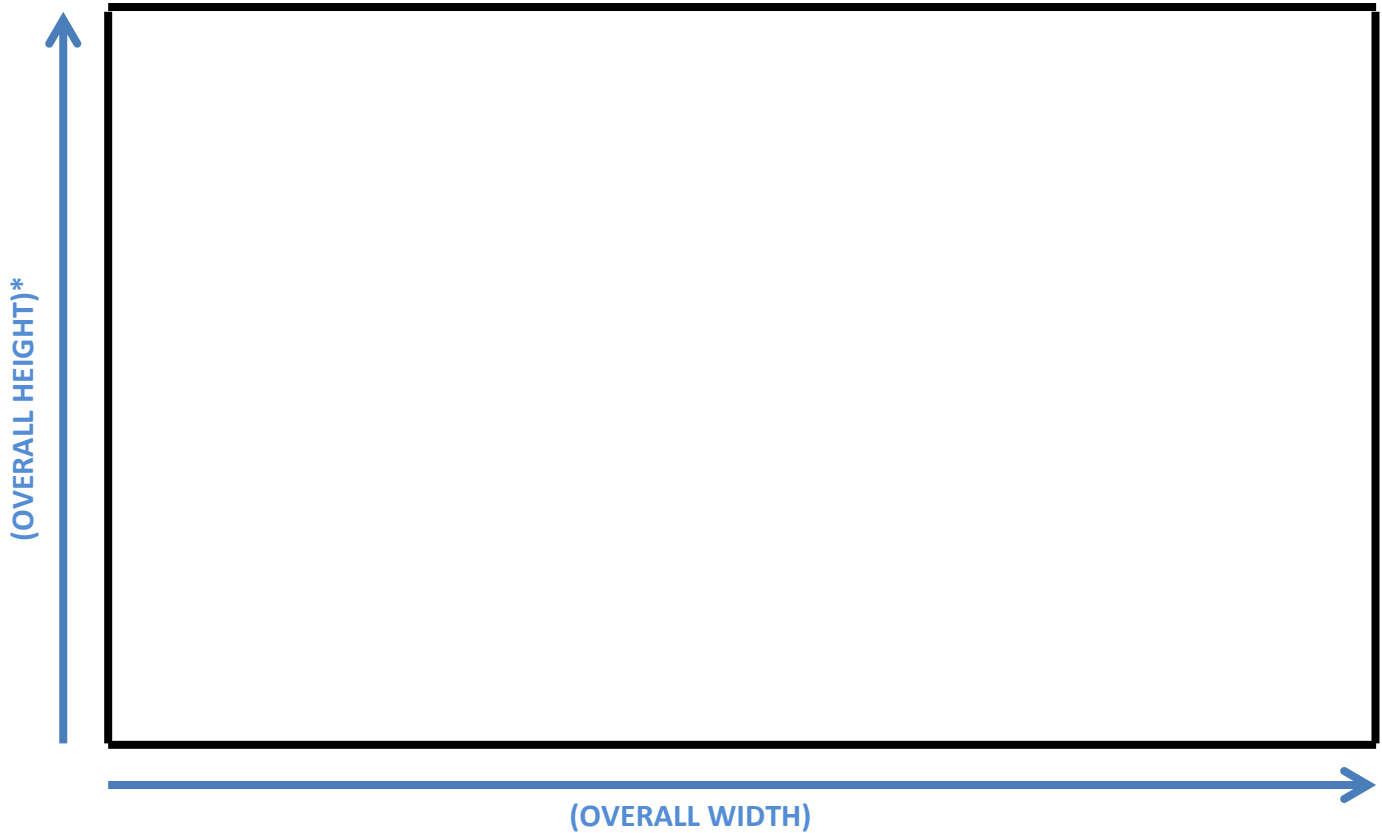
¹ When the leveler opens, it may "over-extend" before settling in the open position. If possible, please also provide the overall height the leveler reaches.

² Depending on the leveler, an extra bar may need to be welded to provide a larger mounting surface. Consult the original equipment manufacturer (OEM) manual for such modifications.

NOVA DLC DOCK LEVELER CURTAIN

CUSTOMER DRAWING

Please provide your photo with this survey. Show the necessary cutouts, patches, and dimensions below:



*Make a note of the “over-extension” height if possible.

Additional Notes:
