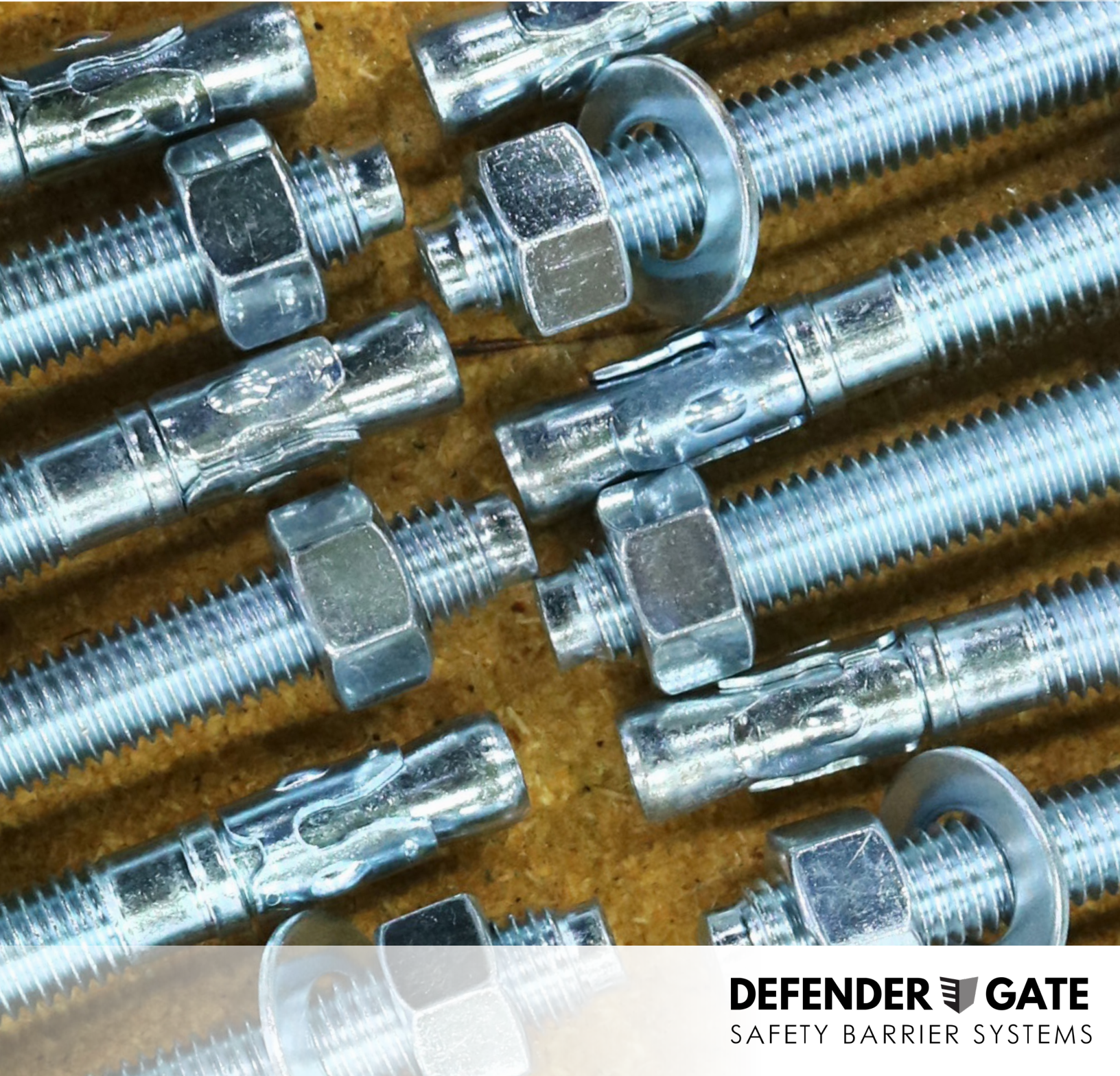


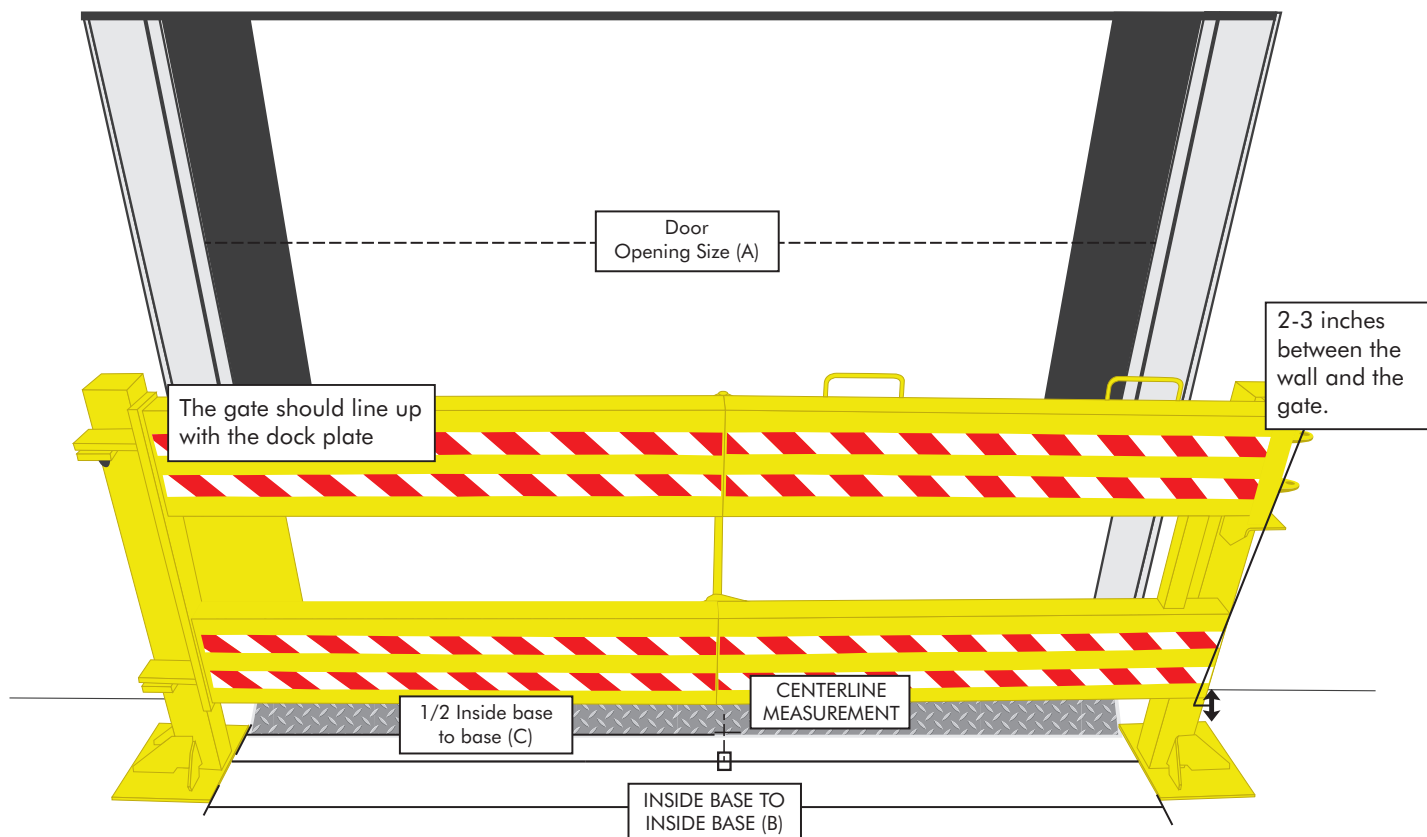
INSTRUCTION MANUAL



DEFENDER GATE™ 10 & 20



DEFENDER  GATE
SAFETY BARRIER SYSTEMS



*Defender Gate™ 20 shown

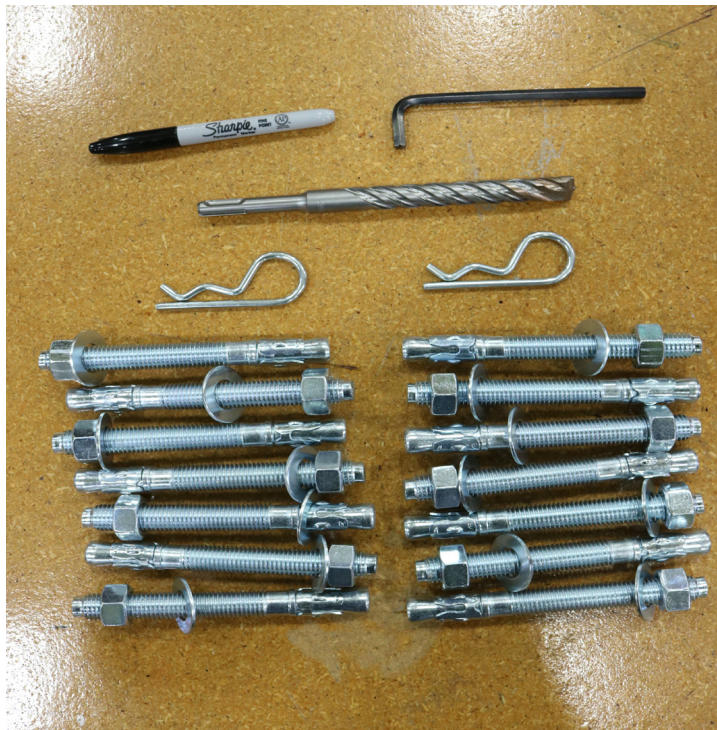
Defender Gates™ Sizing Chart

Opening Size (A)	Inside base to inside base (B)	1/2 from Base to Base (C)	Defender Gate Size
6 Foot	72.250 Inches	36.1250 Inches	6 Foot
8 Foot	96.250 Inches	48.1250 Inches	8 Foot
9 Foot	108.250 Inches	54.1250 Inches	9 Foot
10 Foot	120.250 Inches	60.1250 Inches	10 Foot

The Defender Gate™ 10 or 20 arrives in three pieces, all of which are securely wrapped and attached to a pallet. All hardware is included.

SHIPMENT CONTAINS:

- Box of Hardware (1)
- Latch Post Bollard (1)
- Hinge Post Bollard (1)
- Gate (1)
- Instruction Manual (1)



HARDWARE:

- 5/8" x 6" Wedge Anchors (14)
- Flat Washers (14)
- Nuts (14)
- Hitch Pins (2)
- 5/8" Drill Bit (1)
- Black Sharpie® Marker (1)
- Padlock (1)
- Allen Wrench (1)



REQUIRED TOOLS: (not included)

- Hammer Drill
- Level
- Tape Measure
- 3/4" Wrench or Socket Wrench
- Hammer

INSTRUCTIONS: PART ONE

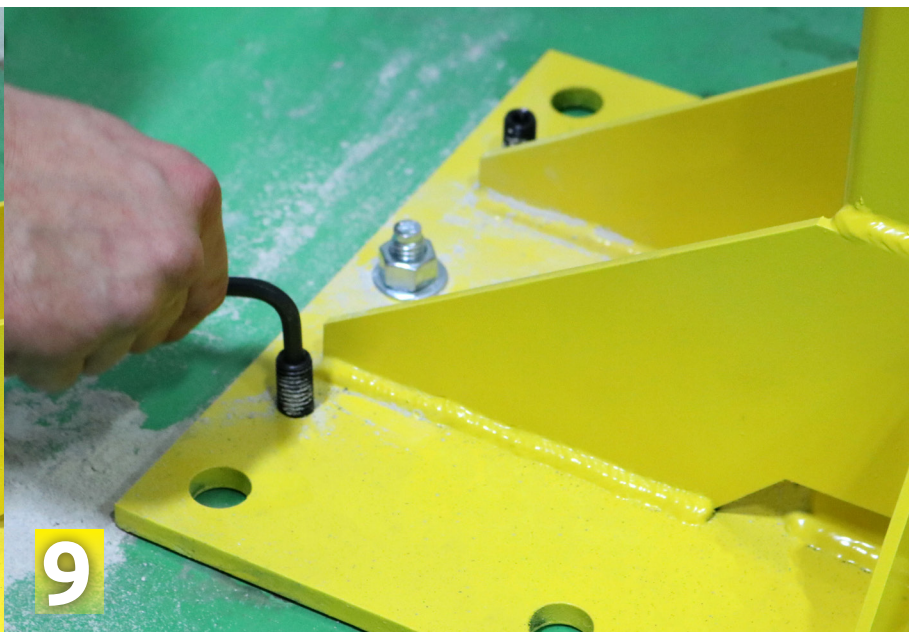
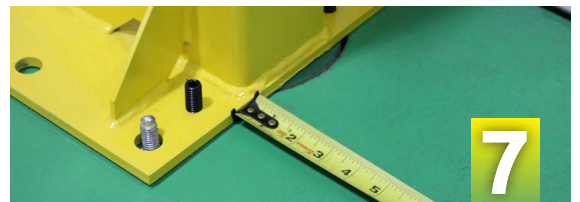
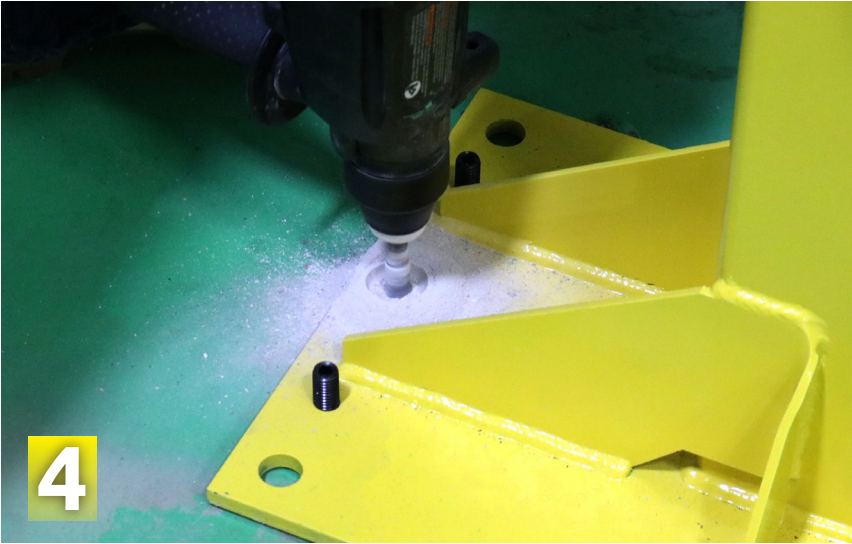
Installing the Bollards.

TOOLS NEEDED:

- Hammer Drill
- Level
- Tape Measure
- 3/4" Wrench or Socket Wrench
- Hammer
- Allen Wrench

Begin with **HINGE BOLLARD**.

1. Measure the size of the door opening (A).
2. Divide this measurement in half to find the centerline of the door opening, which will align with the center of the gate. Mark the centerline with the included Sharpie® marker.
3. Line the HINGE BOLLARD up with the dock plate and make sure the bollard is at least 2-3 inches from the wall or dock rails. Set the inside edge of the HINGE BOLLARD baseplate with half of the centerline measurement.
4. Use a hammer drill and the included 5/8" drill bit to drill seven holes for the anchor bolts. Holes must be at a minimum depth of 5 inches. Use the bollard as a template and mark the holes with the included Sharpie® marker or simply hold the bollard in place while drilling.
5. Place washer and nut on the bolt **before striking**.
6. With the bollard in place, insert the seven 5/8" x 6" anchor bolts with a hammer.
7. Measure the distance from the inside edge of the HINGE BOLLARD baseplate to the inside edge of the LATCH BOLLARD baseplate (B). Make sure both bollards are evenly distanced from the wall or frame.
8. Repeat steps 3-7 to install LATCH BOLLARD.
9. Level both bollards using the included Allen wrench and leveling screws. Begin with the HINGE BOLLARD.
 - a. Place the level on the far left side to check plumb
 - b. Tighten screws until level
 - c. Place the level on the adjacent side
 - d. Loosen/tighten nuts on bollard to level
 - e. Repeat on LATCH BOLLARD



INSTRUCTIONS: PART TWO

Installing the Gate.

TOOLS NEEDED:

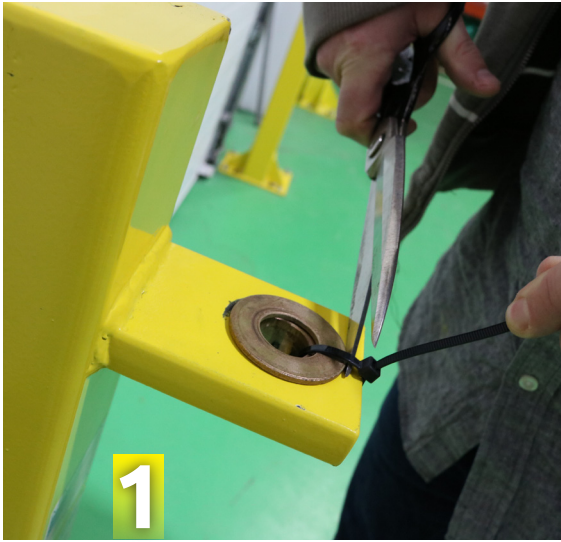
- Hammer Drill
- Level
- 3/4" Wrench or Socket Wrench

Although it is possible for one person to install the gate, we recommend using a forklift or an additional helper while lifting or carrying the gate.

1. Remove the zip tie that holds the thrust washer to the bollard. Keep the washer in place so that it remains over the hole for the pivot pin.
2. With the GATE still folded, insert the pivot pins into the HINGE BOLLARD holes. The handles must be on top and the 3M® striped reflective tape must be facing the dock's interior. Move the GATE slightly back and forth until the GATE is firmly seated.
3. Insert the hitch pins into the two pivot pins on the GATE.
4. Open gate and check leveling at multiple points.
5. Close the gate, drop the closure pin in and lock. A slight leveling adjustment may be necessary to assure a smooth fit in the LATCH BOLLARD.

Defender Gate™ installation is complete and the safety barrier system is now ready to use.







DEFENDER  GATE

SAFETY BARRIER SYSTEMS

1-800-236-7325 | WWW.NOVALOCKS.COM