



Vehicle Restraint Owner's Manual

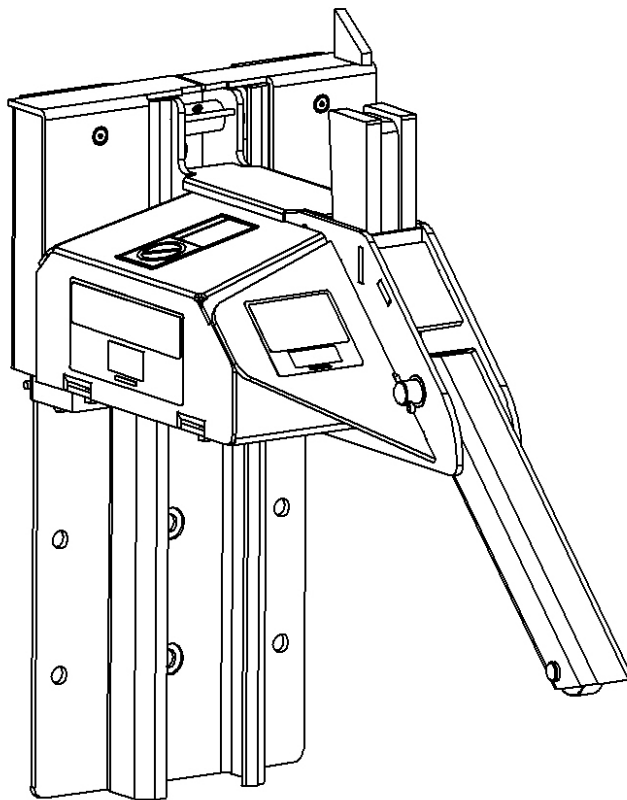


TABLE OF CONTENTS

SAFETY WARNINGS	1
OPERATING PROCEDURES	4
ROUTINE MAINTENANCE	9
TROUBLESHOOTING	12
OUTSIDE JUNCTION BOX	17
PARTS	18
WARRANTY.....	25

Nova Technology engages in ongoing product development and reserves the right to make changes and improvements to any of the products described in this document without prior notice.

SAFETY WARNINGS

Recognize Safety Information

Safety-Alert Symbol



The Safety-Alert Symbol is a graphic representation intended to convey a safety message without the use of words. When you see this symbol, be alert to the possibility of death or serious injury. Follow the instructions in the safety message panel.

DANGER

The use of the word DANGER signifies the presence of an extreme hazard or unsafe practice which will result in death or serious injury.

WARNING

The use of the word WARNING signifies the presence of a serious hazard or unsafe practice which could result in death or serious injury.

CAUTION

The use of the word CAUTION signifies possible hazard or unsafe practice which could result in minor or moderate injury.

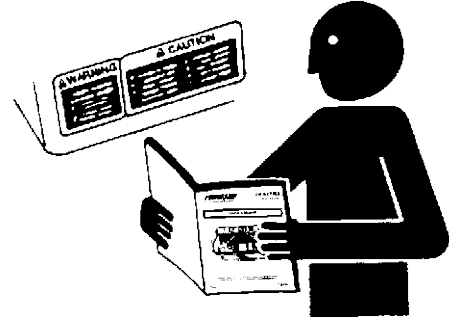
NOTICE

NOTICE is used to address practices not related to physical injury.

SAFETY INSTRUCTIONS

Safety instruction (or equivalent) signs indicate specific safety-related instructions or procedures.

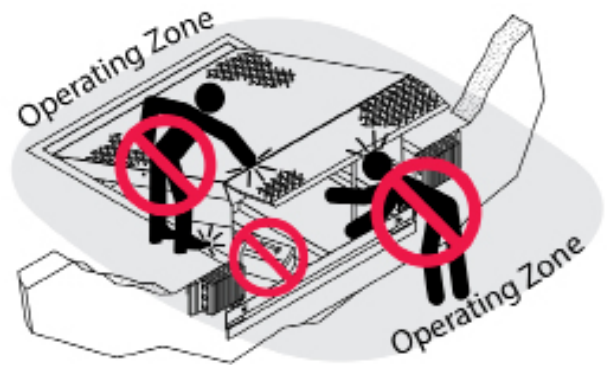
General Operational Safety Precautions



Read and understand the Owner's/User's Manual and become thoroughly familiar with the equipment and its controls before operating the transport vehicle restraint.

Never operate a transport vehicle restraint while a safety device or guard is removed or disconnected.

Never remove DANGER, WARNING, or CAUTION signs, Placards or Decal's on the equipment unless replacing them.




Do not start the equipment until all unauthorized personnel in the area have been warned and have moved outside the operating zone.

Remove any tools or foreign objects from the operating zone before starting.

Keep the operating zone free of obstacles that could cause a person to trip or fall.

SAFETY WARNINGS

Operational Safety Precautions

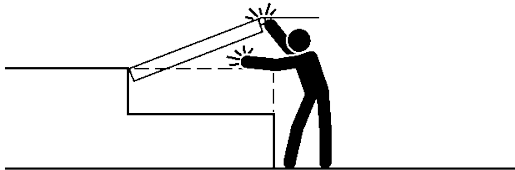
 Learn the safe way to operate this equipment. Read and understand the manufacturer's instructions. If you have any questions, ask your supervisor.

DANGER

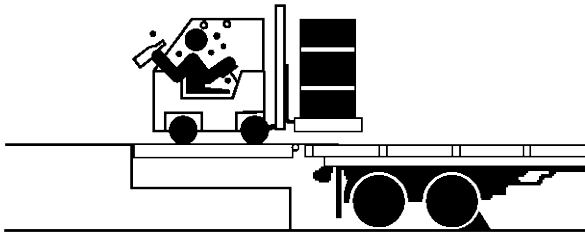


Stay clear of dock leveling device and restraint when transport vehicle is entering or leaving area.

Do not move or use the dock leveling device and restraint if anyone is under in front or near it.



Keep hands and feet clear of pinch points. Avoid putting any part of your body near moving parts.



Do not operate any equipment while under the influence of alcohol or drugs.

Failure to follow these instructions will result in death or serious injury.

If the NOVA Lock-Up™ vehicle restraint does not operate properly using the procedures in this manual, **BE CERTAIN TO CHOCK THE VEHICLE WHEELS BEFORE LOADING OR UNLOADING.** Contact NOVA or your local representative for service.

WARNING



Chock/restrain all transport vehicles. Never remove the wheel chocks until loading or unloading is finished and transport vehicles driver has been given permission to drive away.

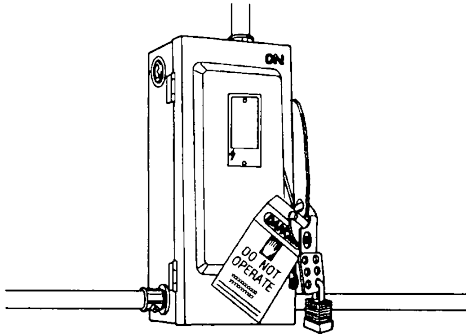
Do not use a broken or damaged restraint device. Make sure proper service and maintenance procedures have been performed before using.

Failure to follow these instructions could result in death or serious injury.

SAFETY WARNINGS

Maintenance Safety Precautions

DANGER



Electrical power must be OFF when servicing the equipment. For maximum protection, use an OSHA approved locking device to lock out all power sources. Only the person servicing the equipment should have the key to unlock the device.

Failure to follow these instructions will result in death or serious injury.

WARNING



Always post safety warnings and barricade the work area at dock level and ground level to prevent unauthorized use of the unit before maintenance is complete.

Failure to follow these instructions could result in death or serious injury.

DANGER



Arc Flash and Shock Hazard PPE [Personal Protection Equipment] Required

De-energize equipment before working on or inside.
Do not open cover without appropriate PPE.
Refer to NFPA 70E for PPE requirements.
This panel may contain more than one power source.



MF2-202-000

Hazardous Voltage Will Result in Death or Serious Injury

WARNING

ALWAYS disconnect electrical power source and ground wire before welding on restraint.

DO NOT ground welding equipment to any electrical components of the restraint. Always ground to the restraint frame.

Failure to follow these instructions could result in death or serious injury and/or damage to restraint.

WARNING

DO NOT grind or weld if hydraulic fluid or other flammable liquid is present on the surface to be ground or welded.

DO NOT grind or weld if uncontained hydraulic fluid or other flammable liquid is present. Stray sparks can ignite spills or leaks near the work area. Always clean up the oil leaks and spills before proceeding with grinding or welding.

Always keep a fire extinguisher of the proper type nearby when grinding or welding.

Failure to follow these instructions could result in death or serious injury.

OPERATING PROCEDURES

WARNING

Before loading or unloading a vehicle at your loading dock while using a Lock-Up™ vehicle restraint, always visually inspect to be sure that the restraint is engaged with the Rear Impact Guard (RIG). If the restraint is still not engaged after backing the trailer firmly against the dock bumpers, secure the trailer by other means.

Be sure that the area around the RIG assembly is clear of obstructions.

Always operate the Lock-Up™ vehicle restraint from the top of the dock.

Inspect all restraint lights daily to make certain they work properly.

Perform maintenance on restraints in accordance with Maintenance on page 9 of this manual.

Lock-Up™ vehicle restraints should be operated only by authorized personnel who have read and understand the Owner's Manual.

If you have questions, call your local representative or NOVA at (800) 236-7325.

FAILURE TO FOLLOW THESE PROCEDURES COULD RESULT IN DEATH OR SERIOUS INJURY.

WARNING

Verify that the text "Lock-Up" is present in the display of the PLC as illustrated in Figure A.

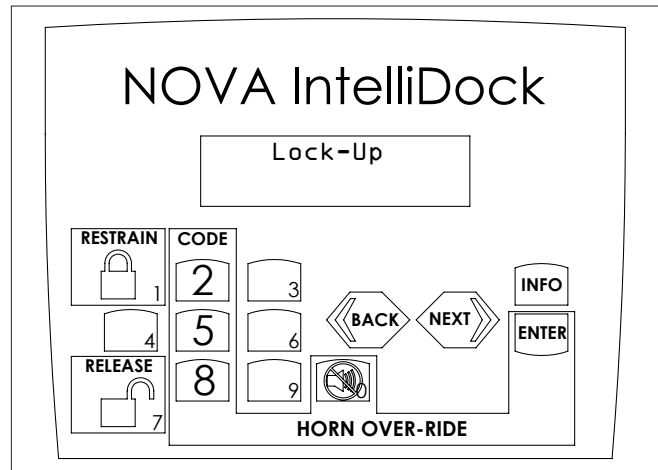


FIGURE A—VERIFY PLC DISPLAY

Stored Position / Restraint UNLOCKED / No Vehicle Present

Barrier is in the STORED position. Inside light is flashing red alerting forklift operator unsafe condition exists. Outside light is flashing green alerting truck driver it is safe to back in. Refer to Figure B.

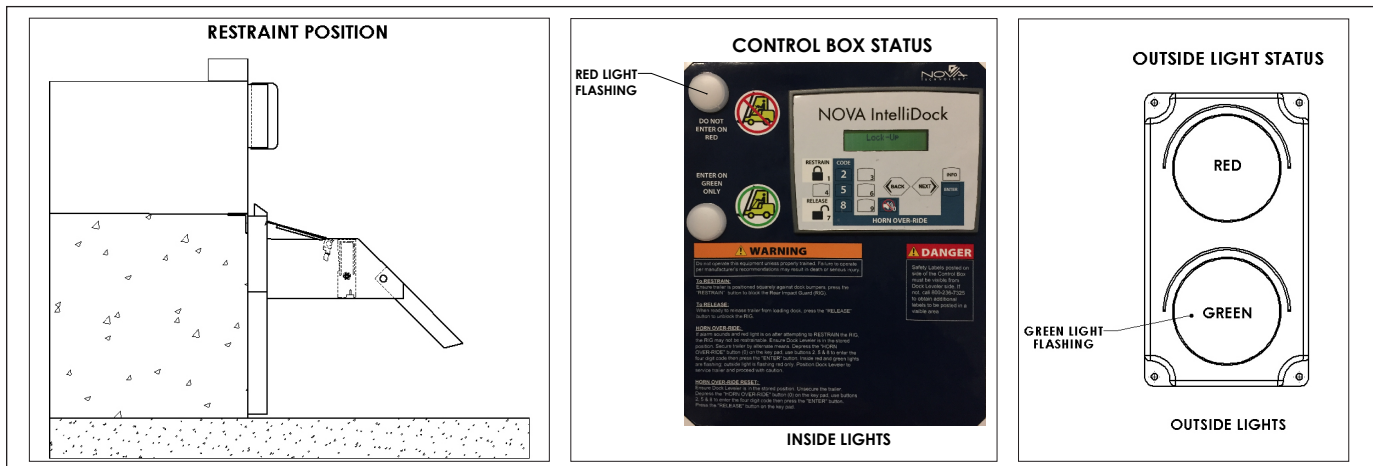


FIGURE B—STORED POSITION/NO VEHICLE PRESENT

OPERATING PROCEDURES

Stored Position / Restraint UNLOCKED / Vehicle Present

Barrier is in the stored position. Inside red light is on constant. Outside light is flashing green. Refer to Figure C.

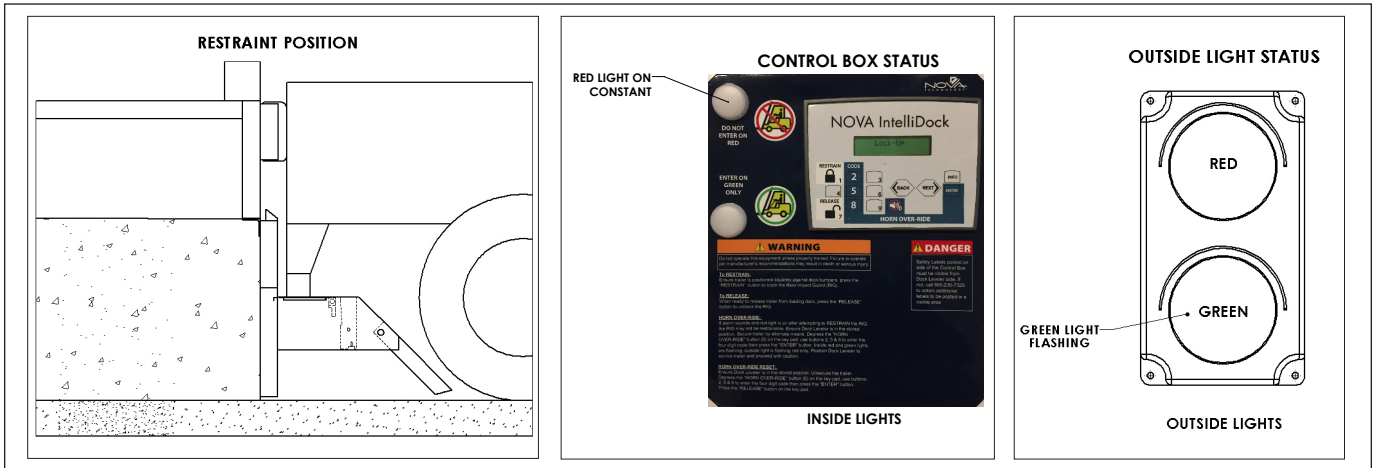


FIGURE C—STORED POSITION/VEHICLE PRESENT

RESTRAIN Button Pressed - Restraint LOCKING

Trailer has backed into loading dock and is parked firmly against dock bumpers. The alarm will sound while the barrier rises from stored position to engage RIG. Inside red light is flashing. Outside light is flashing red alerting truck driver not to move. Refer to Figure D.

⚠ CAUTION

If trailer can not be restrained due to a lift gate or other obstruction that could become damaged, proceed to OVER-RIDE.

If horn continues to sound, proceed to FAULT, otherwise proceed to Restraint LOCKED.

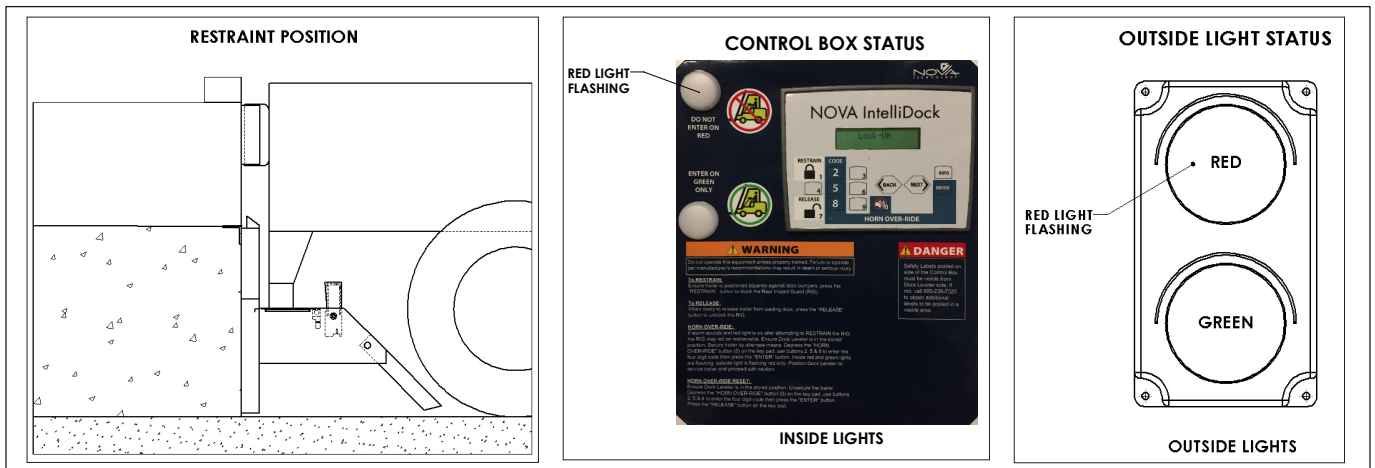


FIGURE D—RESTRAINT LOCKING

OPERATING PROCEDURES

RESTRAINT LOCKED

Once the RIG is blocked by the barrier, a LOCKED condition exists. Inside light is flashing green alerting the forklift operator a safe condition exists. Outside light is flashing red alerting truck driver not to move. Refer to Figure E.

! WARNING

Visually inspect to ensure that the Lock-Up™ vehicle restraint barrier securely engages the RIG of the trailer before operating the dock leveler.

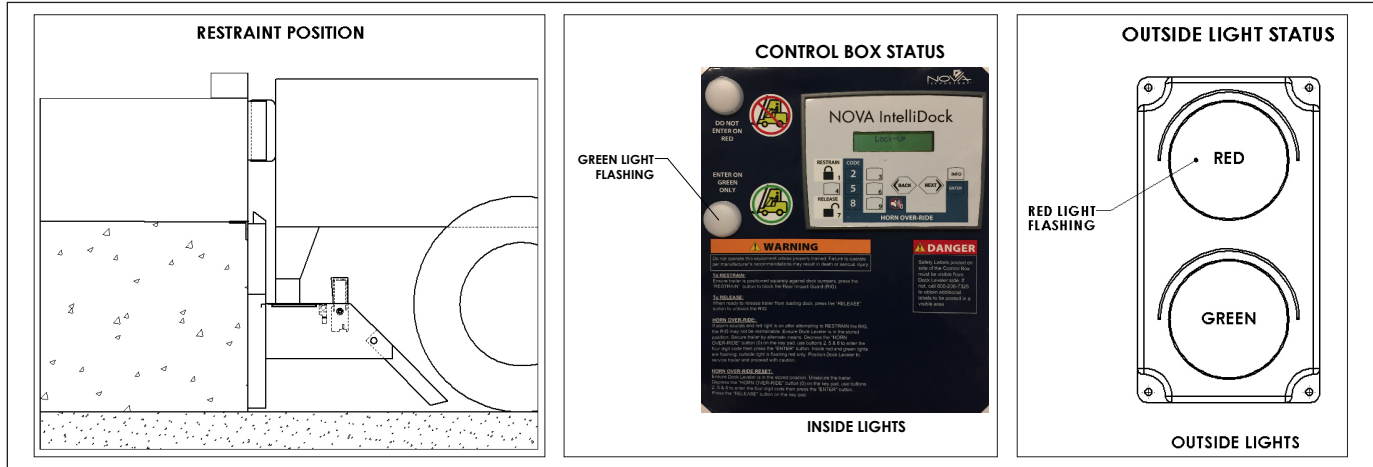


FIGURE E—RESTRAINT LOCKED

RELEASE Button Pressed- Restraint UNLOCKING

Barrier travels from the LOCKED position to the STORED position. Inside light is flashing red. Outside light is flashing red alerting truck driver not to move. Refer to Figure F. When the process is complete, the barrier is in the stored position shown in Figure C on page 4.

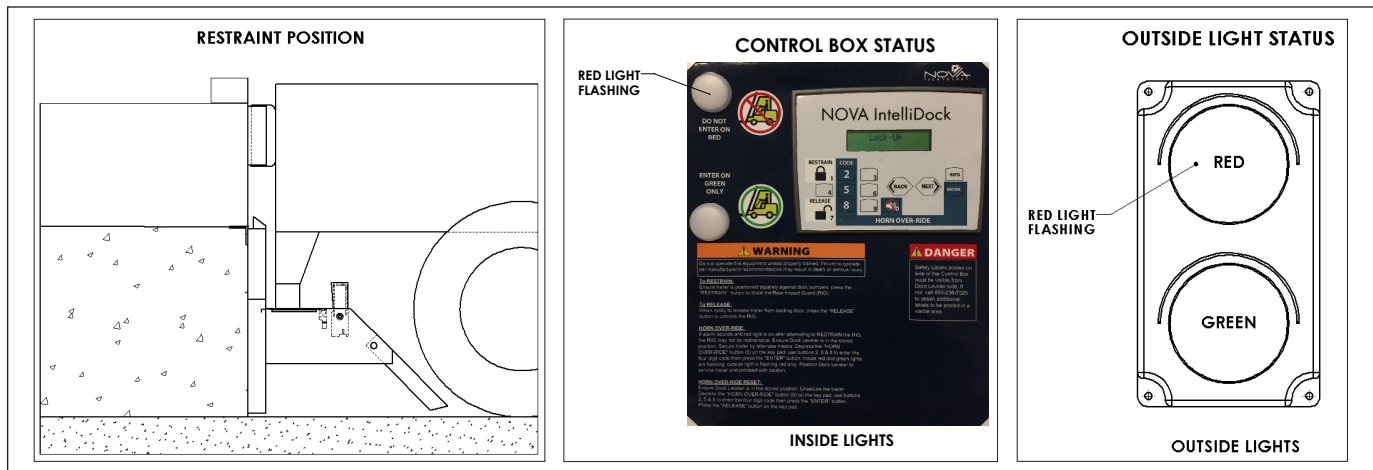


FIGURE F—RESTRAINT UNLOCKING

OPERATING PROCEDURES

FAULT from LOCKING State

Barrier cannot block the RIG. This could be due to a RIG that is located too far toward the rear axle, bent, obstructed or missing. Inside light is flashing red and horn is pulsing, alerting the forklift operator that the trailer is not locked. Outside light is flashing red alerting the truck driver not to move. See Figure G.

If the trailer is parked firmly against the dock bumpers proceed to horn over-ride. If not, press RELEASE to clear the fault, have trailer back up and repeat Restraint LOCKING procedure.

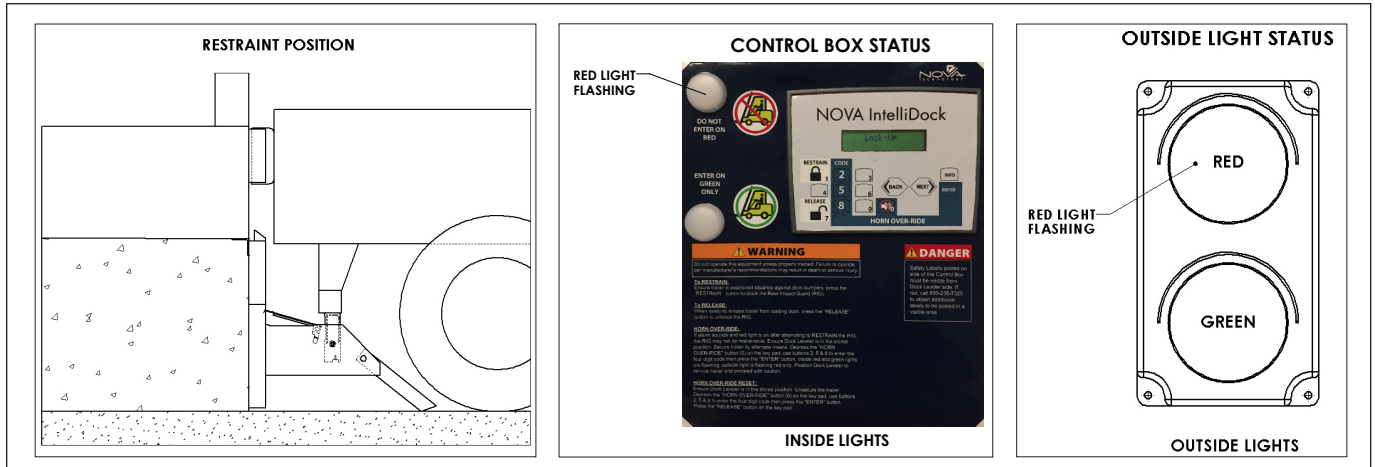


FIGURE G—FAULT STATE

HORN OVER-RIDE

If alarm sounds and red light is on after attempting to RESTRAIN the RIG, the trailer may not be serviceable. Ensure Dock Leveler is in the stored position. Secure trailer by alternate means. Depress the “HORN OVER-RIDE” button (0) on the key pad, enter default over-ride code 5528 then press the “ENTER” button. Inside red and green lights are flashing; outside light is flashing red only. Position Dock Leveler to service trailer and proceed with caution.

! DANGER

Before activating “HORN OVER-RIDE”, ensure that dock leveler is in stored position and secure trailer by other means.

HORN OVERRIDE RESET

Ensure Dock Leveler is in the stored position. Unsecure the trailer. Depress the “HORN OVER-RIDE” button (0) on the key pad, enter default over-ride code 5528 then press the “ENTER” button. Press the “RELEASE” button on the key pad.

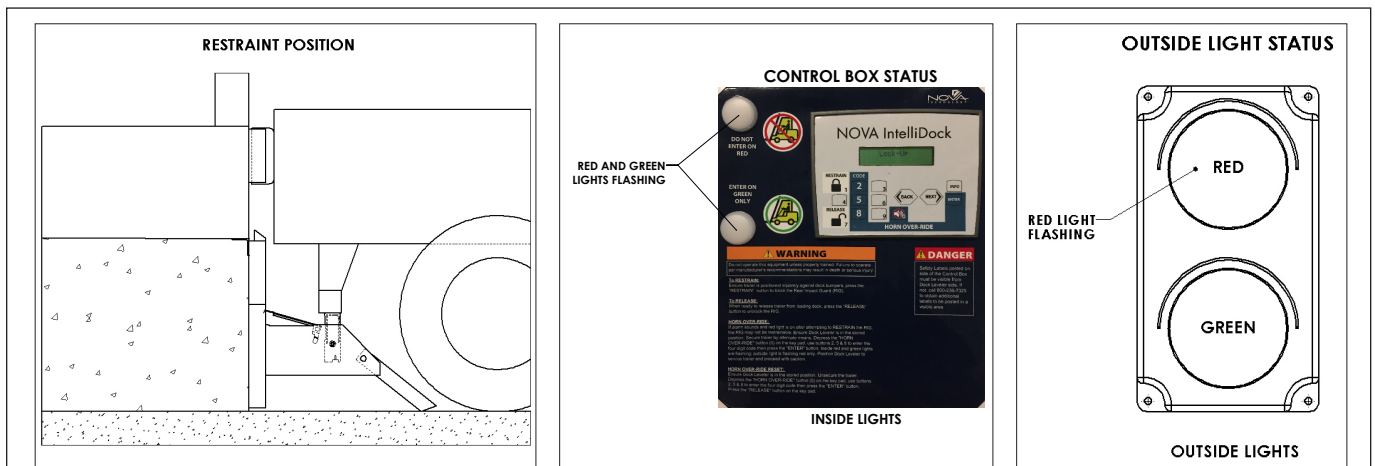


FIGURE H—HORN OVER-RIDE STATE

This page intentionally left blank

! DANGER

When working with electrical or electronic controls, make sure that the power source has been locked out and tagged according to OSHA regulations and approved local electrical codes.

Post safety warnings and barricade work area, at dock level and at ground level, to prevent unauthorized use of the dock.

! WARNING

Safe operation of the Lock-Up™ vehicle restraint requires all lights and the horn to be working properly. **DO NOT** use the Lock-Up™ vehicle restraint if parts are broken or missing.

! WARNING

Always post safety warnings and barricade the work area at dock level and ground level to prevent unauthorized use of the unit before maintenance is complete.

! CAUTION

Use lifting device (e.g. crane, jack) when lifting carriage (approx. 105 lbs.). Lifting by hand may cause back injury.

NOTICE

Maintenance may be required more frequently at loading docks exposed to harsh environments (extreme climates, corrosive chemicals, frequency of usage, etc.). If these conditions exist, consult NOVA for accelerated maintenance requirements.

ROUTINE MAINTENANCE

DAILY

- Remove debris around Lock-Up™ vehicle restraint.
- Verify that restraint operates smoothly and inside, outside lights and horn are working.
- Replace damaged or missing light bulbs and lenses.
- Repair, remount, or replace outside and inside signs and labels as required.
- Inspect dock bumpers. Missing bumper must be replaced.

180 DAYS

- Perform all Daily maintenance.
- Grease rollers at fittings located on the top and bottom axle with a synthetic oil-base moly grease with a temperature range of -40° to 170°F.
- Inspect the outside electrical connections (junction box, conduit, power harness) and outside communication light. Loose or damaged components must be repaired or replaced.
- Check that all concrete anchor bolts are torqued to 60 ft-lbs.
- Perform operational test after all maintenance repairs and adjustments are complete.
- Inspect dock bumpers. Four inches (4") of protection is required. Worn, torn, loose or missing bumpers must be replaced.

360 DAYS

- Perform all Daily and 180 Day maintenance.

NOTE: If a leveler is installed at the Lock-Up™ vehicle restraint location, it may be necessary to raise the leveler before performing maintenance. Raise the leveler, insert and secure the maintenance strut, and LOCKOUT/TAGOUT the power source.

In addition, it is recommended and good safety practice to use an additional means to support the dock platform and lip anytime when physically working in front of or under the dock leveler. This additional means may include, but not limited to a boom truck, fork truck, stabilizing bar or equivalent.

ROUTINE MAINTENANCE

! DANGER

When working with electrical or electronic controls, make sure that the power source has been locked out and tagged according to OSHA regulations and approved local electrical codes.

This new system requires no maintenance.

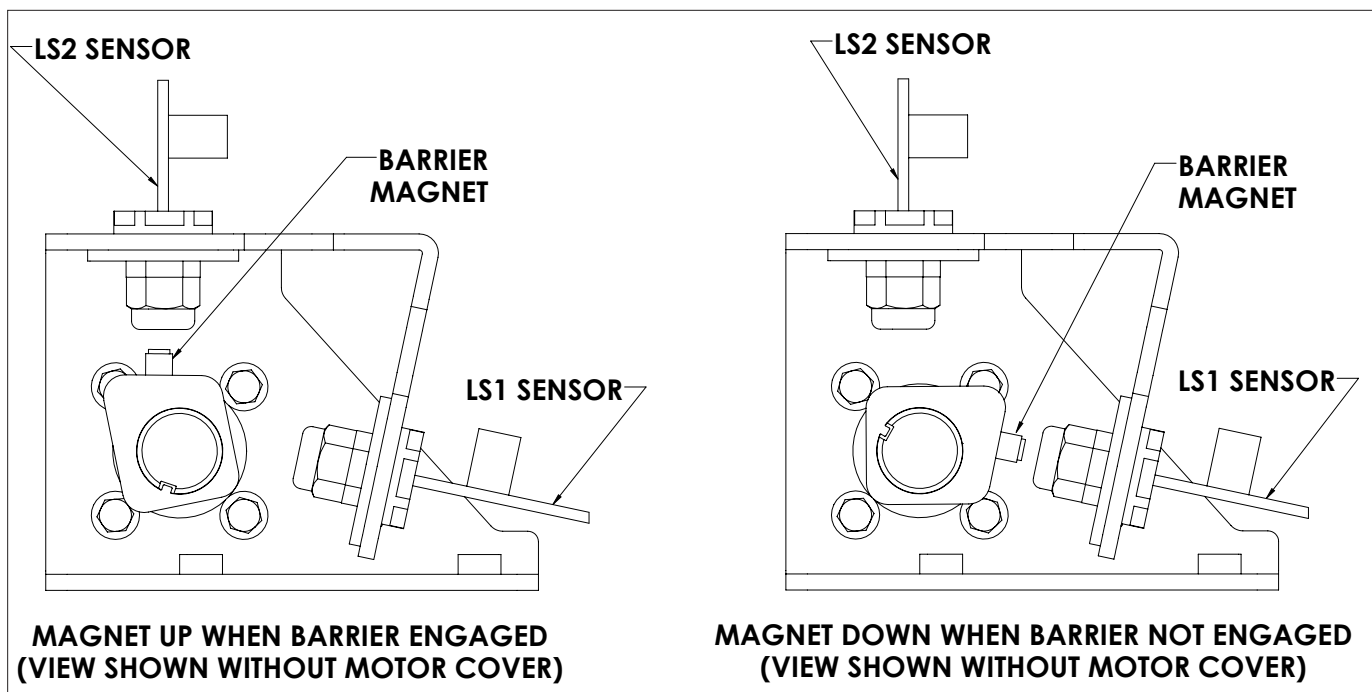


FIGURE I—BARRIER SENSOR OPERATION

ROUTINE MAINTENANCE

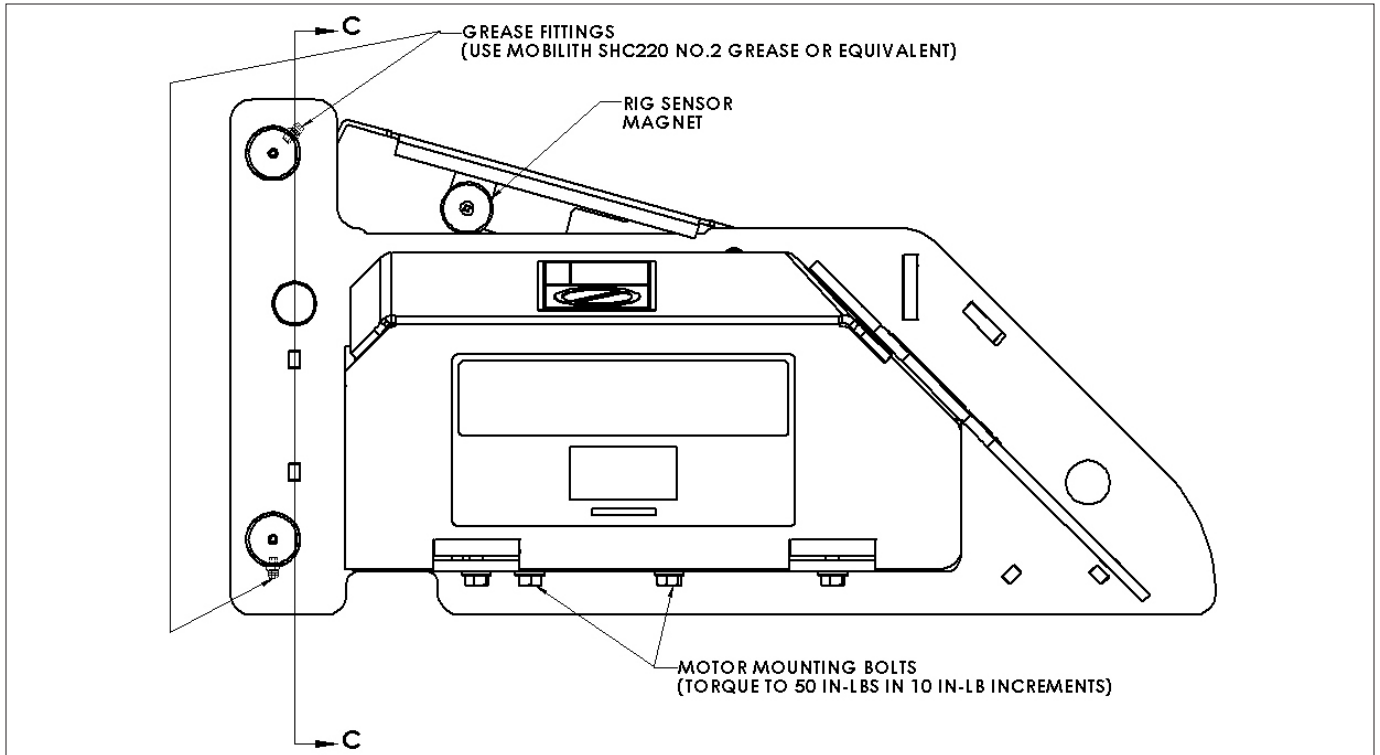


FIGURE J—GREASE FITTING, RIG SENSOR MAGNET & MOTOR MOUNTING BOLT LOCATION

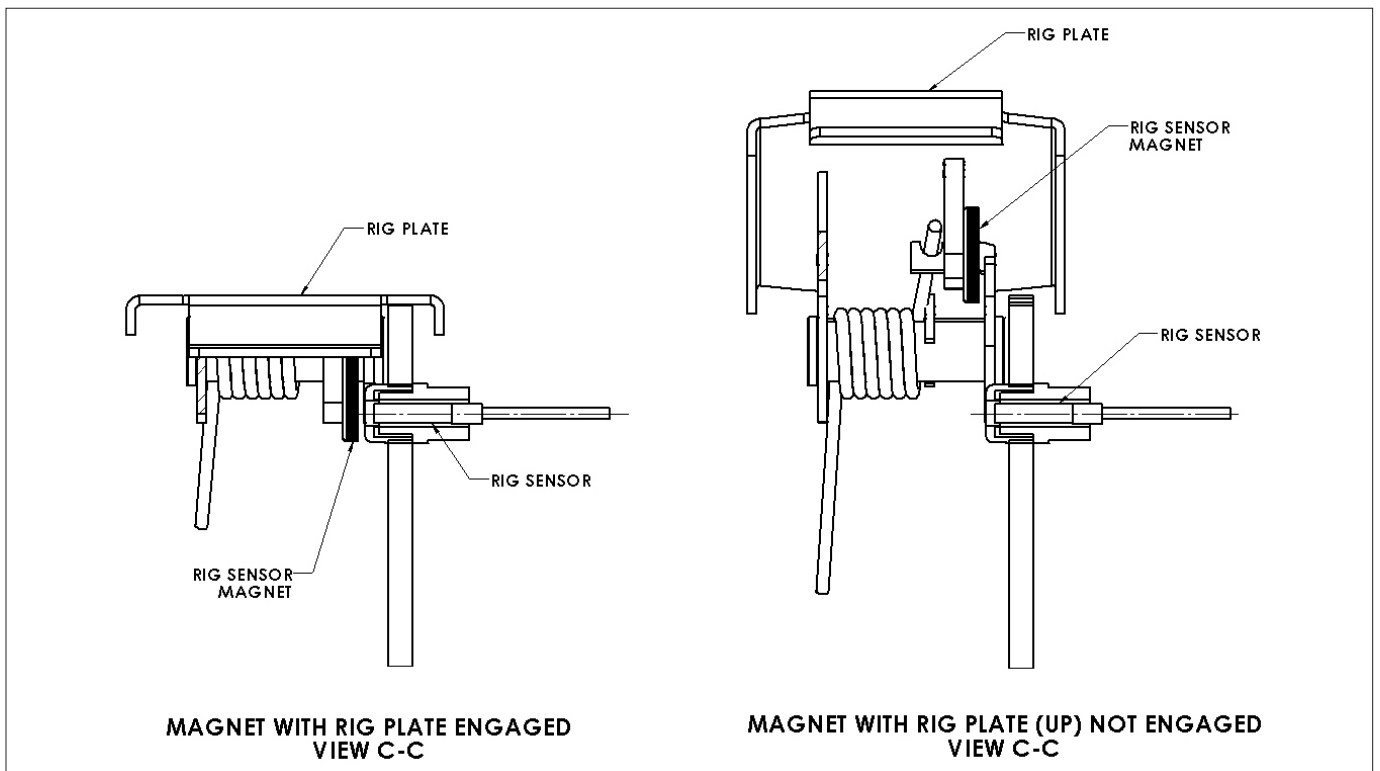


FIGURE K—RIG SENSOR PLATE OPERATION

TROUBLESHOOTING

PROBLEM	PROBABLE CAUSE	RESOLUTION
Lock-Up™ vehicle restraint lights do not flash and the barrier does not raise.	<ul style="list-style-type: none"> • Power source malfunction. • Incorrect wiring. 	<ul style="list-style-type: none"> • Check power source, including facility circuit breaker and circuit breaker on power module. • Verify wiring per figure L, page 17.
Lock-Up™ vehicle restraint lights are flashing but the barrier does not raise or lower to full extent.	<ul style="list-style-type: none"> • Low incoming voltage. • Drive motor defective. • Incorrect wiring. 	<ul style="list-style-type: none"> • Verify incoming voltage at L1 and N is a minimum of 110V. Do not power off a control transformer from other equipment unless properly sized for load. • Check motor. Repair or replace as needed. • Verify wiring per figure L, page 17.
Lock-Up™ vehicle restraint is operational but all lights are out.	<ul style="list-style-type: none"> • Bulbs burnt out, loose or missing. • Incorrect wiring. 	<ul style="list-style-type: none"> • Check all bulbs and replace as required. • Verify wiring per figure L, page 17.
Lock-Up™ vehicle restraint horn does not sound but barrier and lights are operational.	<ul style="list-style-type: none"> • Horn is defective. • Incorrect wiring. 	<ul style="list-style-type: none"> • Power horn using 24V DC power. If horn does not sound, replace as required. • Verify wiring per figure L, page 17.
Lock-Up™ vehicle restraint barrier is in stored position with an inside green light.	<ul style="list-style-type: none"> • Incorrect wiring. 	<ul style="list-style-type: none"> • Verify wiring of LS1, LS2 and LS3 at the control box and outside junction box.
Lock-Up™ vehicle restraint carriage does not return to a full up position.	<ul style="list-style-type: none"> • Carriage binding in track. • Damaged roller track plate. • Broken or weak springs. 	<ul style="list-style-type: none"> • Check to see if roller track plate is clean and rollers are clean, free of debris and lubricated. Use only approved grease to lubricate rollers. • Verify that the roller track plate is straight and not damaged. • Remove spring cover and replace as required.

TROUBLESHOOTING *(continued)*

1. ENTERING MAINTENANCE MODE ON THE CONTROL BOX

Key point: This step can be done on any display or operation except when in Horn Over-Ride.

- a. Depress the "HORN OVER-RIDE" button (#0 button).
- b. The red light, on the control box, will start flashing if the green light was flashing or remain a constant red. This is normal to notify the end user that they are about to enter a new mode.
- c. Enter the Maintenance code, 28252, and then press "ENTER".
 - i. If the wrong code was entered, the "Wrong PW: Reenter Or wait" display will appear. On this display, repeat steps 1a through 1c to enter maintenance mode.
 - ii. Or if no further input is completed within 30 seconds, the "Wrong PW: Reenter Or wait" display will clear and the screen will return to the previous display.

2. NAVIGATING THROUGH MAINTENANCE MODE

- a. Use the "NEXT" and "BACK" buttons to navigate through Maintenance Mode.

Display #1 = Faults

Displays #2 - 7 = Counters

Displays #8 & 9 = Cycles

Displays #10 & 11 = Inputs & Outputs

Display #12 = Change Horn Over-Ride Password

#1 Display — Faults

This display shows the most current fault status. There may be more than one fault occurring at a given time but only the most recent one can be displayed. See displays #2-6 for more fault information. Also, check display #10 for proper inputs.

#2 Display — No LS1 No LS2

This display shows the number of times Limit Switch 1 (LS1) and Limit Switch 2 (LS2) are off at the same time. LS1 and LS2 are found inside the motor tray. See Figure M, on page 18, item 10.

This fault can occur if	Resolution
The barrier is unable to lock or unlock fully.	Ensure no obstruction is blocking the barrier from locking or unlocking fully.
LS1 malfunctioned when the barrier is locked or unlocked.	Ensure LS1 is tightened and working properly. Inputs can be verified on display #10 (page 15).
LS2 malfunctioned when the barrier is locked or unlocked.	Ensure LS2 is tightened and working properly. Inputs can be verified on display #10 (page 15).

If obstruction cannot be moved, enter Horn Over-Ride mode by following the instructions printed on the control box.

If the magnet mount presents the magnet correctly (see figure M, on page 18, item 28), and the limit switch is positioned and tightened properly but cannot read the position of the barrier, replace sensor. (Part Number: MF4-181-000)

#3 Display — Both LS1 & LS2 On

This display shows the number of times LS1 and LS2 are on at the same time. LS1 and LS2 are found inside the motor tray. See Figure M, on page 18, item 10.

TROUBLESHOOTING *(continued)*

This fault can occur if	Resolution
LS1 malfunctioned when the barrier is locked or unlocked.	Ensure LS1 is tightened and working properly. Inputs can be verified on display #10 (page 15).
LS2 malfunctioned when the barrier is locked or unlocked.	Ensure LS2 is tightened and working properly. Inputs can be verified on display #10 (page 15).

If the magnet mount presents the magnet correctly and the limit switch is positioned and tightened properly but cannot read the position of the barrier, replace sensor. (Part Number: MF4-181-000)

#4 Display – LS1 On LS2 Off

This display shows the number of times, LS1 has been on and LS2 has been off when the barrier is up. LS1 and LS2 are found inside the motor tray. See Figure M, on page 18, item 10.

This fault can occur if	Resolution
The barrier is unable to lock because the carriage is not able to travel further down the roller track.	Realign trailer so RIG is not blocking barrier. If trailer cannot be realigned, enter Horn Over-Ride mode by following the instructions printed on the control box.
LS1 and LS2 are reversed.	Verify LS1 and LS2 are positioned as shown in FIGURE I (page 10).
LS1 malfunctioned when the barrier is locked.	Ensure LS1 is tightened and working properly. Inputs can be verified on display #10 (page 15).
LS2 malfunctioned when the barrier is locked.	Ensure LS2 is tightened and working properly. Inputs can be verified on display #10 (page 15).

If the magnet mount presents the magnet correctly and the limit switch is positioned and tightened properly but cannot read the position of the barrier, replace sensor. (Part Number: MF4-181-000)

#5 Display – LS1 Off LS2 On

This display shows the number of times, LS1 has been off and LS2 has been on when the barrier is down. LS1 and LS2 are found inside the motor tray. See Figure M, on page 18, item 10.

This fault can occur if	Resolution
The barrier is unable to unlock because RIG is pinching barrier from lowering.	Back up trailer slightly to relieve pressure from barrier.
LS1 and LS2 are reversed.	Verify LS1 and LS2 are positioned as shown in FIGURE I (page 10).
LS1 malfunctioned when the barrier is unlocked.	Ensure LS1 is tightened and working properly. Inputs can be verified on display #10 (page 15).
LS2 malfunctioned when the barrier is unlocked.	Ensure LS2 is tightened and working properly. Inputs can be verified on display #10 (page 15).

If the magnet mount presents the magnet correctly and the limit switch is positioned and tightened properly but cannot read the position of the barrier, replace sensor. (Part Number: MF4-181-000)

#6 Display – No RIG Present

This display shows the number of times, Limit Switch 3 (LS3) or RIG sensor has been off while the barrier is engaged. LS3 is found inside the motor tray. See Figure M, on page 18, item 11.

TROUBLESHOOTING *(continued)*

This fault can occur if	Resolution
The RIG sensor plate is not depressed when the barrier is locked.	Realign trailer so RIG depresses RIG sensor plate. If RIG sensor plate cannot be depressed when the barrier is locked, enter Horn Over-Ride mode by following the instructions printed on the control box.
LS3 malfunctioned when the barrier is locked.	Ensure LS3 is tightened and working properly. Inputs can be verified on display #10 (page 15).
Magnet not present on RIG sensor plate.	Replace magnet or RIG sensor plate assembly.

If the RIG sensor plate presents the magnet correctly, and the limit switch is positioned and tightened properly, but cannot read the position of the magnet, replace sensor. (Part Number: MF4-182-000)

#7 Display — Horn Over-Ride Count

This display is to show the number of times the Horn Over-Ride function has been activated. The Horn Over-Ride function should only be used when the barrier cannot properly secure the RIG.

Key Point: The maintenance code can also be used to disable Horn Over-Ride in case the standard code for Horn Over-Ride has been over-written.

#8 Display — Total Cycles

This display shows the number of complete cycles the product has gone through. One cycle is defined as the barrier moving from the unlocked position to the locked position and back to the unlocked position.

#9 Display — Cycles 2 Service

This display shows how many cycles the Lock-Up can go through before service is needed for the items on the list below:

ITEM NO.	PART NUMBER	DESCRIPTION	QTY.
1	CB-1004	12 AMP RELAY	1
2	CB-1005	20 AMP RELAY	1

For replacement parts, contact NOVA Technology.

#10 Display — 12345678 Inputs

This display shows all inputs going to the control box. The number zero (0) means the input is off. The number one (1) means the input is on. The list of all the inputs is listed below:

- | | |
|--------|--------|
| 1. LS1 | 5. N/A |
| 2. LS2 | 6. N/A |
| 3. LS3 | 7. N/A |
| 4. N/A | 8. N/A |

#11 Display — 12345678 Outputs

This display shows all inputs going to the control box. The number zero (0) means the input is off. The number one (1) means the input is on. The list of all the inputs is listed below:

- | | |
|------------------------------|-----------------------|
| 1. Control Box — Red Light | 5. Motor 1 — Restrain |
| 2. Control Box — Green Light | 6. Motor 2 — Release |
| 3. Outside — Red Light | 7. Alarm Horn |
| 4. Outside — Green Light | 8. N/A |

TROUBLESHOOTING *(continued)*

#12 Display — Enter New Override Password:

This display is for changing the password to enter and exit Horn Over-Ride. Once on this screen, press "ENTER" to change current password. Then enter new password. The new password can range from 1 to 9999. Once the new password has been typed, press "ENTER" to successfully change the password. Any leading zeros will be eliminated. Provide the new over-ride password to authorized dock attendant.

3. EXITING MAINTENANCE MODE ON THE CONTROL BOX

Key point: This procedure can be done on any maintenance screen.

- a. Depress the "HORN OVER-RIDE" button (#0 button).
- b. The red light, on the control box, will start flashing if the green light was flashing or remain a constant red. This is normal to notify the end user that they are about to enter a new mode.
- c. Enter the Maintenance code, 28252, and then press "ENTER".
 - i. If the wrong code was entered, the "Wrong PW: Reenter Or wait" display will appear. On this display, repeat steps 3a through 3c to exit maintenance mode.
 - ii. Or if no further input is completed within 30 seconds, the "Wrong PW: Reenter Or wait" display will clear and the screen will return to last display prior to entering maintenance mode.

OUTSIDE JUNCTION BOX

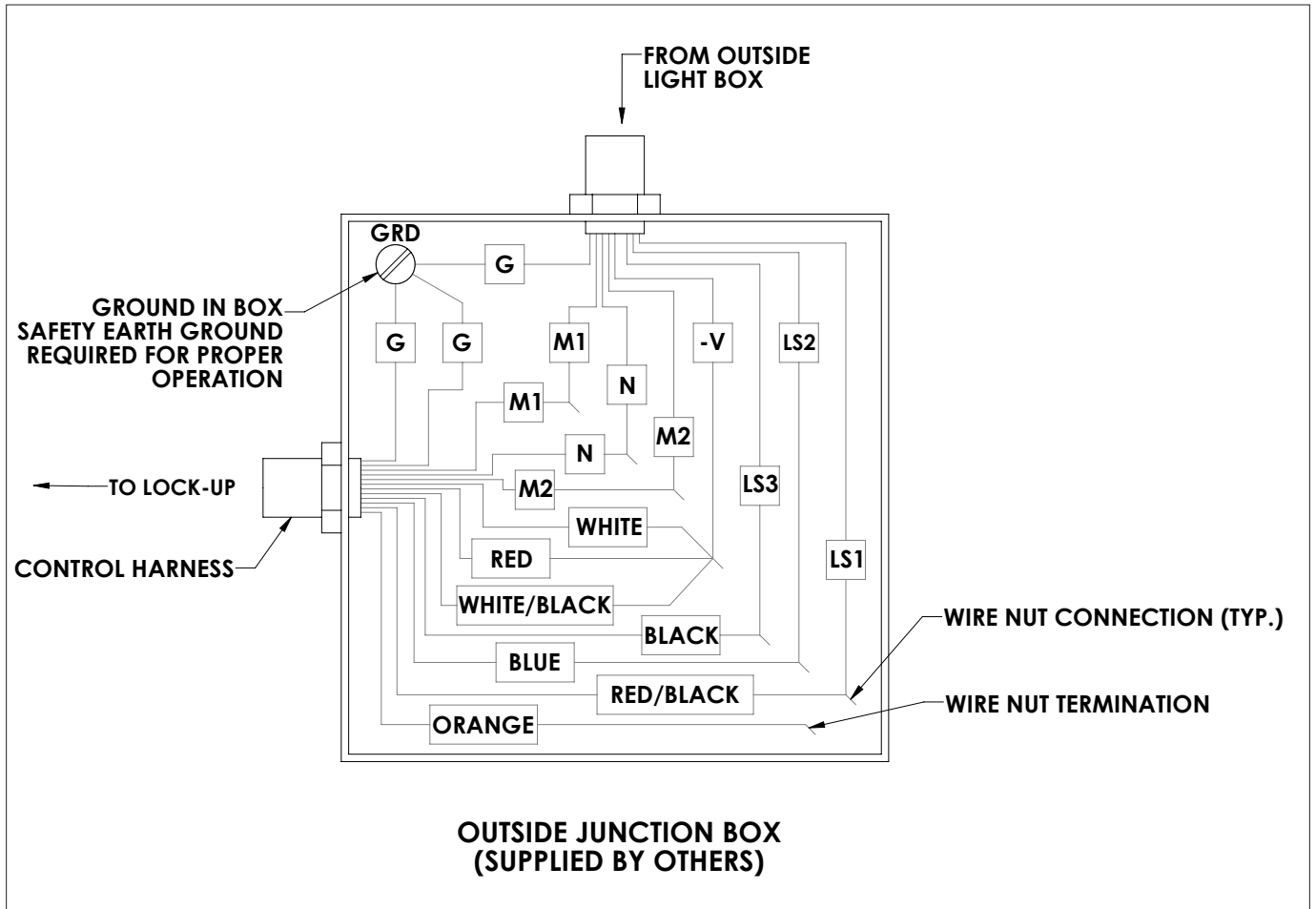


FIGURE L—OUTSIDE JUNCTION BOX

PARTS

CARRIAGE ASSEMBLY DRAWING

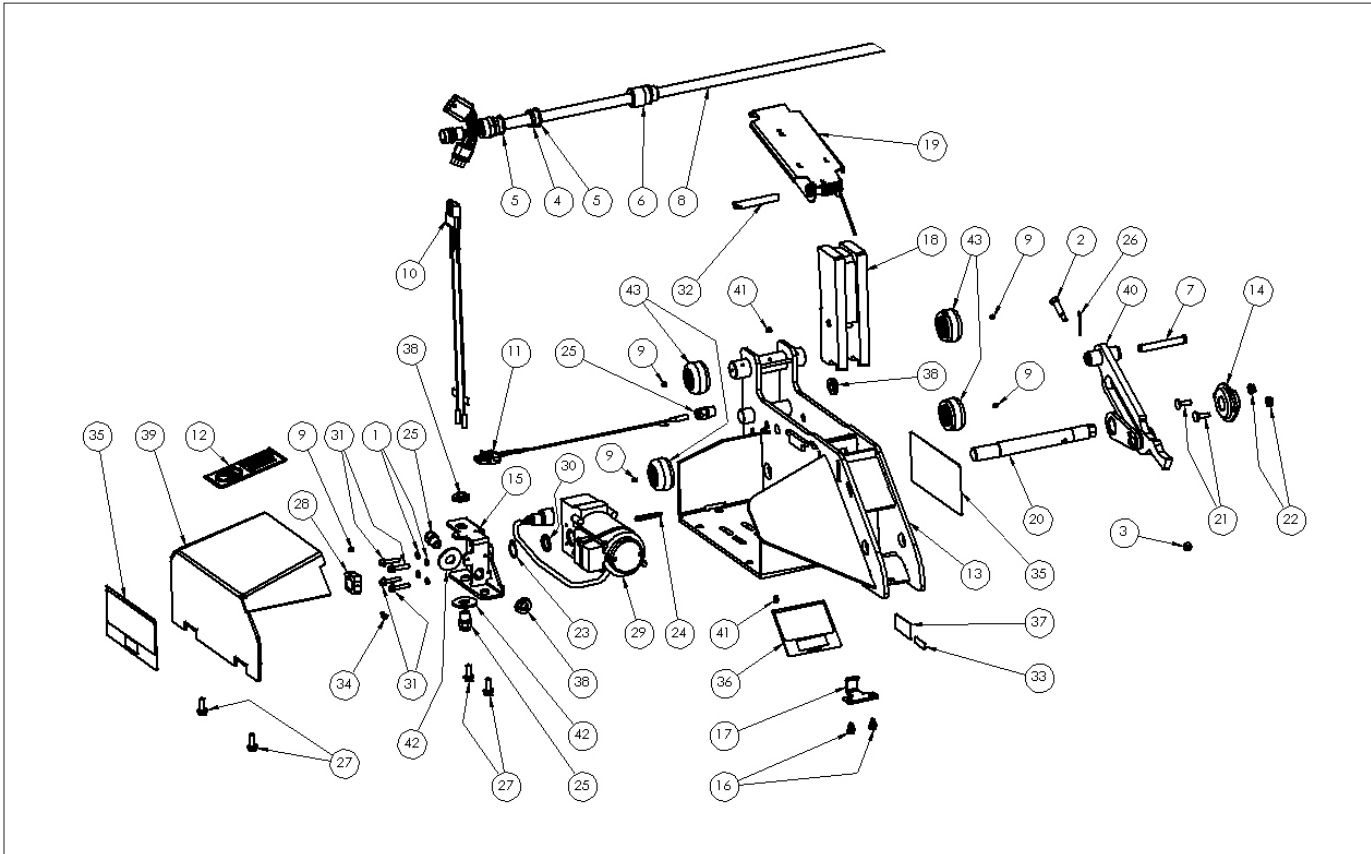


FIGURE M—CARRIAGE ASSEMBLY

CARRIAGE ASSEMBLY PARTS LIST

ITEM NO.	PART NUMBER	DESCRIPTION	QTY.
1	MF2-071-000	1/4" LOCKWASHER	4
2	MF4-161-000	Ø3/8" X 1 1/4" LONG SHOULDER, 5/16-18 THREAD	1
3	MF4-125-000	5/16-18 HEX NUT, NYLOK	1
4	MF2-034-000	3/4" CONDUIT NIPPLE	1
5	MF2-037-000	3/4" CONDUIT LOCK NUT	2
6	MF2-033-000	CORD GRIP	1
7	MF4-157-000	Ø1/2" X 3 1/2" CLEVIS PIN, ZINC	1
8	MF4-184-000	WIRE HARNESS	1
9	MF2-017-002	1/4-28 X 1/4" SOCKET SET SCREW	5
10	MF4-181-000	SENSOR, LS1 & LS2	1
11	MF4-182-000	SENSOR, RIG	1
12	MF2-199-000	NO STEP DECAL	1

PARTS**CARRIAGE ASSEMBLY PARTS LIST (continued)**

ITEM NO.	PART NUMBER	DESCRIPTION	QTY.
13	MF4-100-000	MF4 CARRIAGE WELDMENT	1
14	MF4-101-000	STAMPED STEEL FLANGE MOUNTED BALL BEARING	1
15	MF4-103-000	MOTOR MOUNT BRACKET ASSEMBLY	1
16	MF4-106-000	1/4-20 X 1/2" LNG HX HD SCRW / EXTRNL TTH LCK WSHR	2
17	MF4-107-000	BARRIER RETAINER	1
18	MF4-108-000	BARRIER ASSEMBLY	1
19	MF4-110-000	RIG SENSOR ASSEMBLY	1
20	MF4-115-000	DRIVE SHAFT	1
21	MF4-118-000	5/16-18 X 1" LONG CARRIAGE BOLT	2
22	MF4-119-000	5/16-18 SERRATED FLANGE NUT	2
23	MF4-120-000	EXTERNAL RETAINING RING FOR Ø1" OUTSIDE SHAFT	1
24	MF4-121-000	□3/16" KEY	1
25	MF4-123-000	3/8 NPT CORD GRIP	3
26	MF4-124-000	COTTER PIN, ZINC	1
27	MF4-126-000	5/16-18 X 7/8" FLANGE HEAD SCREW	4
28	MF4-127-000	MAGNET MOUNT	1
29	MF4-129-000	MF4 MOTOR KIT (includes ITEMS 1, 15 & 31)	1
30	MF4-137-000	SPACER, DRIVE SHAFT TO MOTOR	1
31	MF4-143-000	1/4-20 X 1 1/4" LG FLNG HD CAP SCRW	4
32	MF4-144-000	RIG SENSOR PIN ASSEMBLY	1
33	MF4-179-000	LOCK-UP PATENT # DECAL	1
34	MF4-146-000	ACTUATOR MAGNET	1
35	MF4-148-000	"NOVA LOCK-UP" HORIZONTAL DECAL	2
36	MF4-149-000	"NOVA LOCK-UP" SQUARE DECAL	1
37	MF4-151-000	SERIAL NUMBER DECAL	1
38	MF4-160-000	CORD GRIP BULKHEAD NUT	3
39	MF4-165-000	MOTOR/CHAIN COVER	1
40	MF4-168-000	MF4 LIFTER/CRANK ASSEMBLY	1
41	MF2-013-000	GREASE FITTING	2
42	MF4-185-000	5/8" FLAT WASHER	2
43	MF2-047-000	ROLLER ASSEMBLY	4

PARTS

ROLLER TRACK ASSEMBLY DRAWING AND PARTS LIST

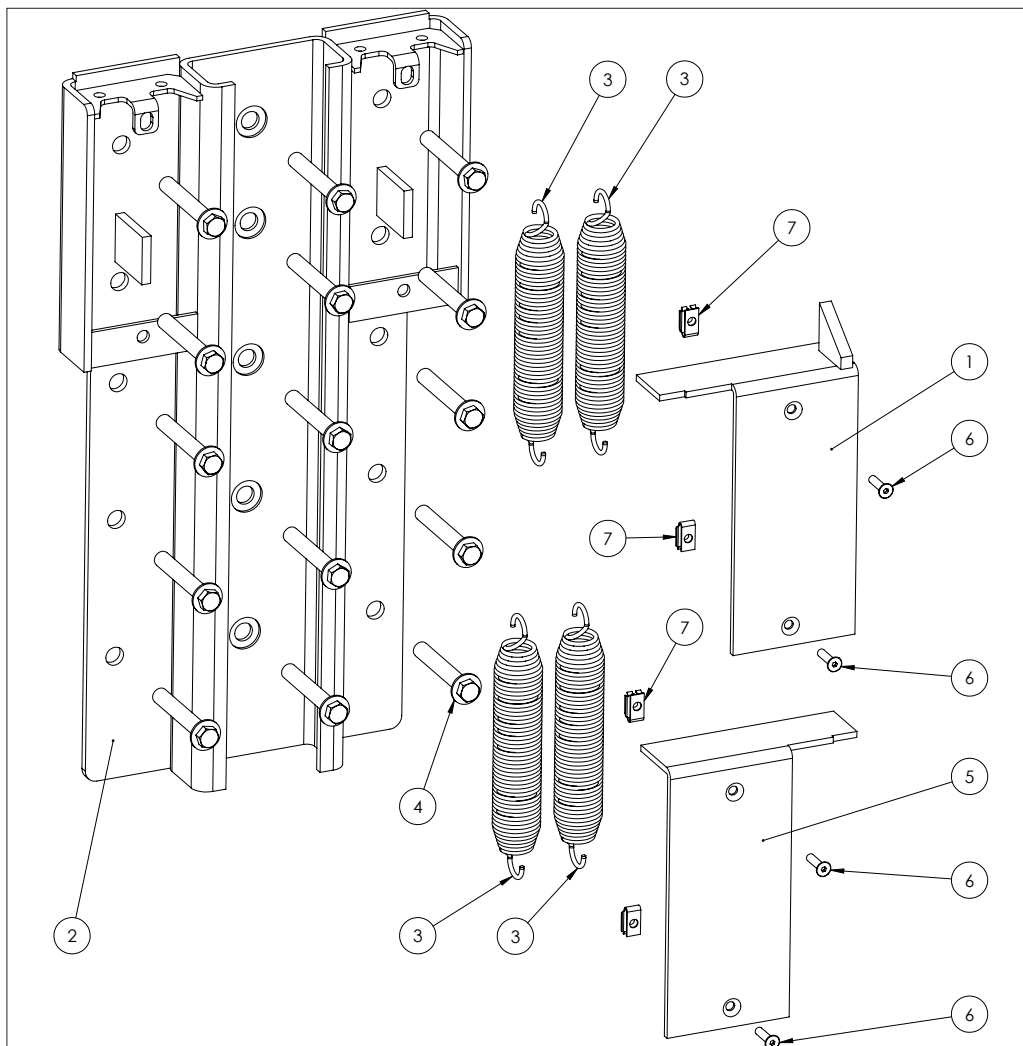


FIGURE N—ROLLER TRACK ASSEMBLY

ITEM NO.	PART NUMBER	DESCRIPTION	QTY.
1	MF2-052-000	SPRING COVER RIGHT HAND	1
2	MF2-048-000	ROLLER TRACK	1
3	MF2-050-000	EXTENSION SPRING	4
4	MF2-054-000	5/8" X 4" CONCRETE ANCHOR	15
5	MF2-051-000	LEFT SPRING COVER	1
6	MF2-060-000	5/16-18 X 1 1/4" FLAT HEAD SOCKET SCREW	4
7	MF2-192-000	5/16-18 U-STYLE CAGE NUT	4

PARTS

SLOPE EXTENSION DRAWING AND PARTS LIST

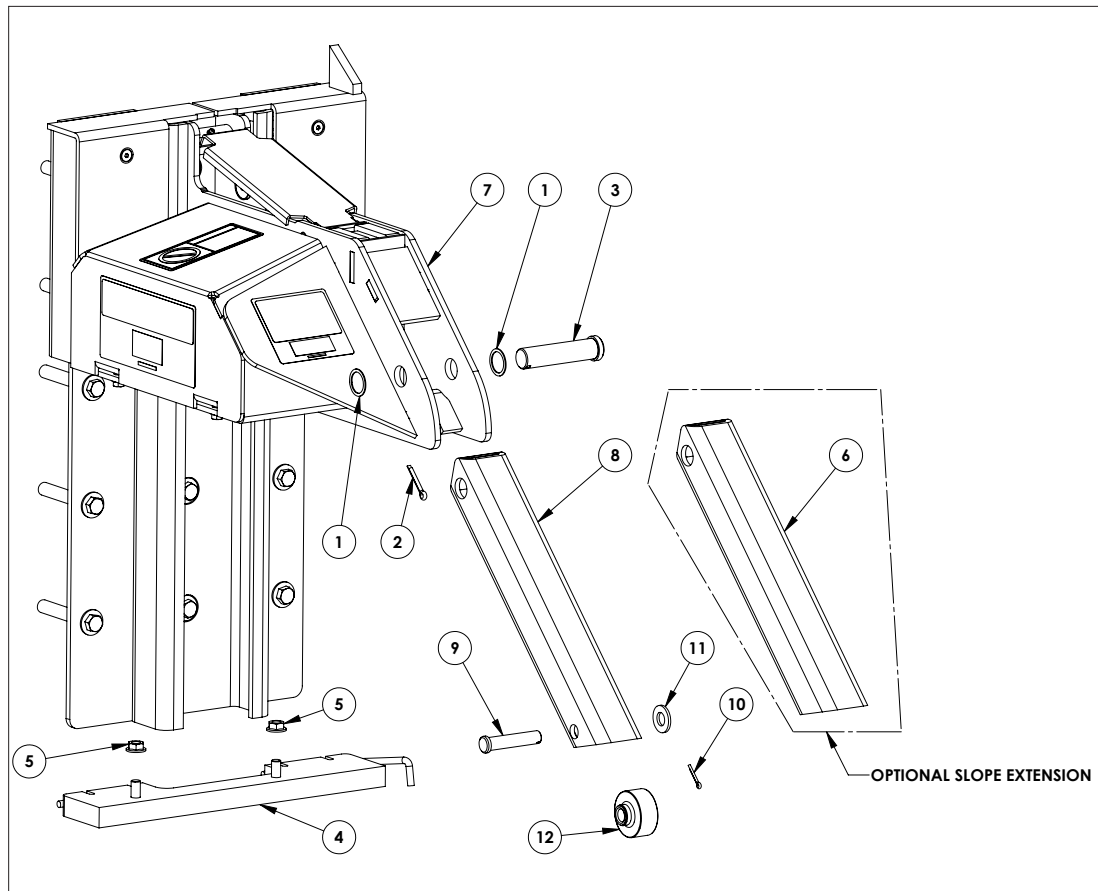


FIGURE O—SLOPE EXTENSION ASSEMBLY

ITEM NO.	PART NUMBER	DESCRIPTION	QTY.
1	MF2-045-000	1" X 18 GAUGE FLAT WASHER	2
2	MF2-046-000	COTTER PIN	1
3	MF2-044-000	SLOPE EXTENSION PIVOT PIN	1
4	MF2-043-000	SPRING MOUNTING PLATE ASSEMBLY	1
5	MF2-026-000	7/16-14 SERRATED FLANGE LOCK NUT	2
6	MF2-002-000	SLOPE EXTENSION	1
7	MF4-136-000	CARRIAGE ASSEMBLY	1
8	MF2-132-000	ROLLER SLOPE EXTENSION	1
9	MF2-143-000	Ø5/8" X 3" CLEVIS PIN	1
10	MF2-142-000	COTTER PIN	1
11	MF2-130-000	5/8" SAE FLAT WASHER	1
12	MF2-136-000	ROLLER ASSEMBLY	1

PARTS

MISCELLANEOUS PARTS

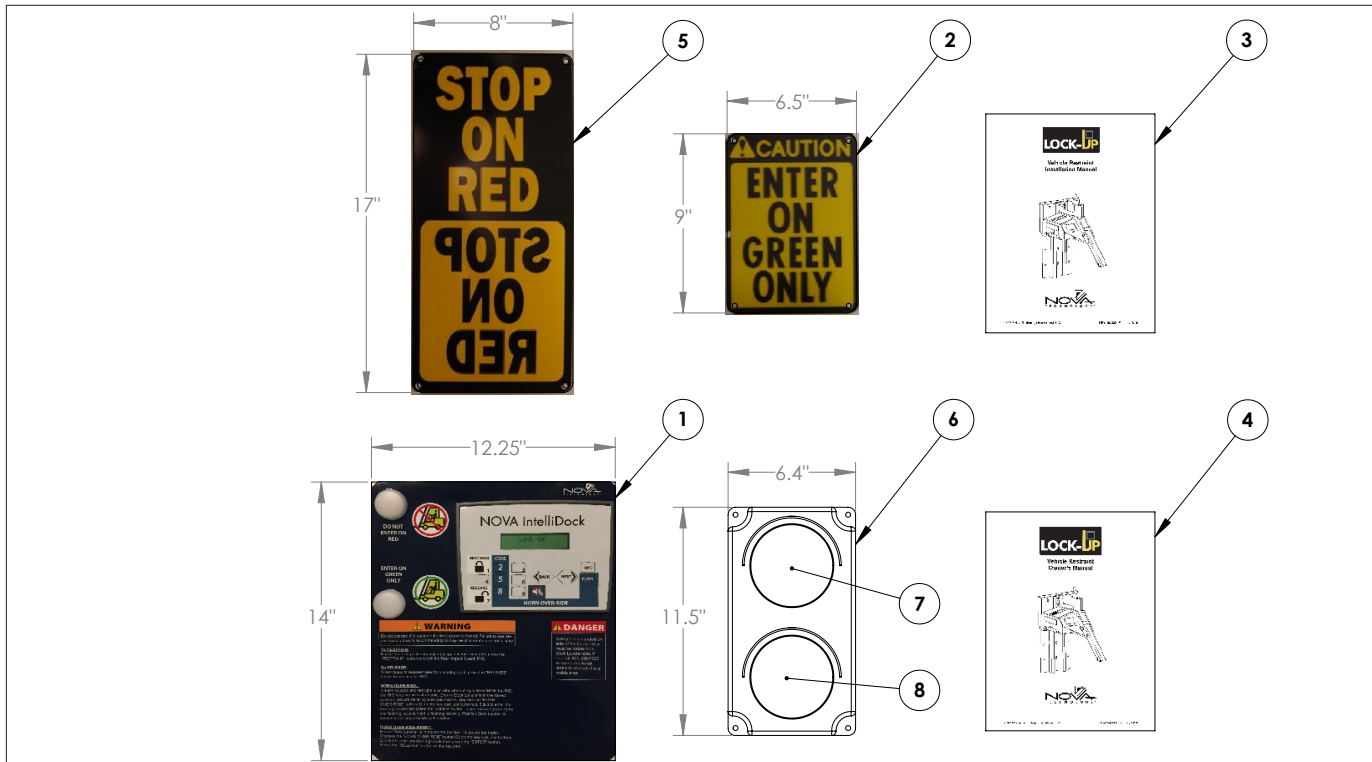


FIGURE P—MISCELLANEOUS PARTS

MISCELLANEOUS REPLACEMENT PARTS LIST

ITEM NO.	PART NUMBER	DESCRIPTION	QTY.
1	CB-40	CONTROL BOX	1
2	MF2-057-000	CAUTION SIGN	1
3	MF4-158-000	INSTALLATION MANUAL	1
4	MF4-159-000	OWNERS MANUAL	1
5	MF2-056-000	STOP ON RED SIGN	1
6	MF4-183-000	OUTSIDE LIGHT ASSEMBLY	1
7	MF4-183-001	OUTSIDE RED LED LIGHT MODULE	1
8	MF4-183-002	OUTSIDE GREEN LED LIGHT MODULE	1

For replacement parts, contact NOVA Technology.

PARTS

CONTROL BOX PARTS

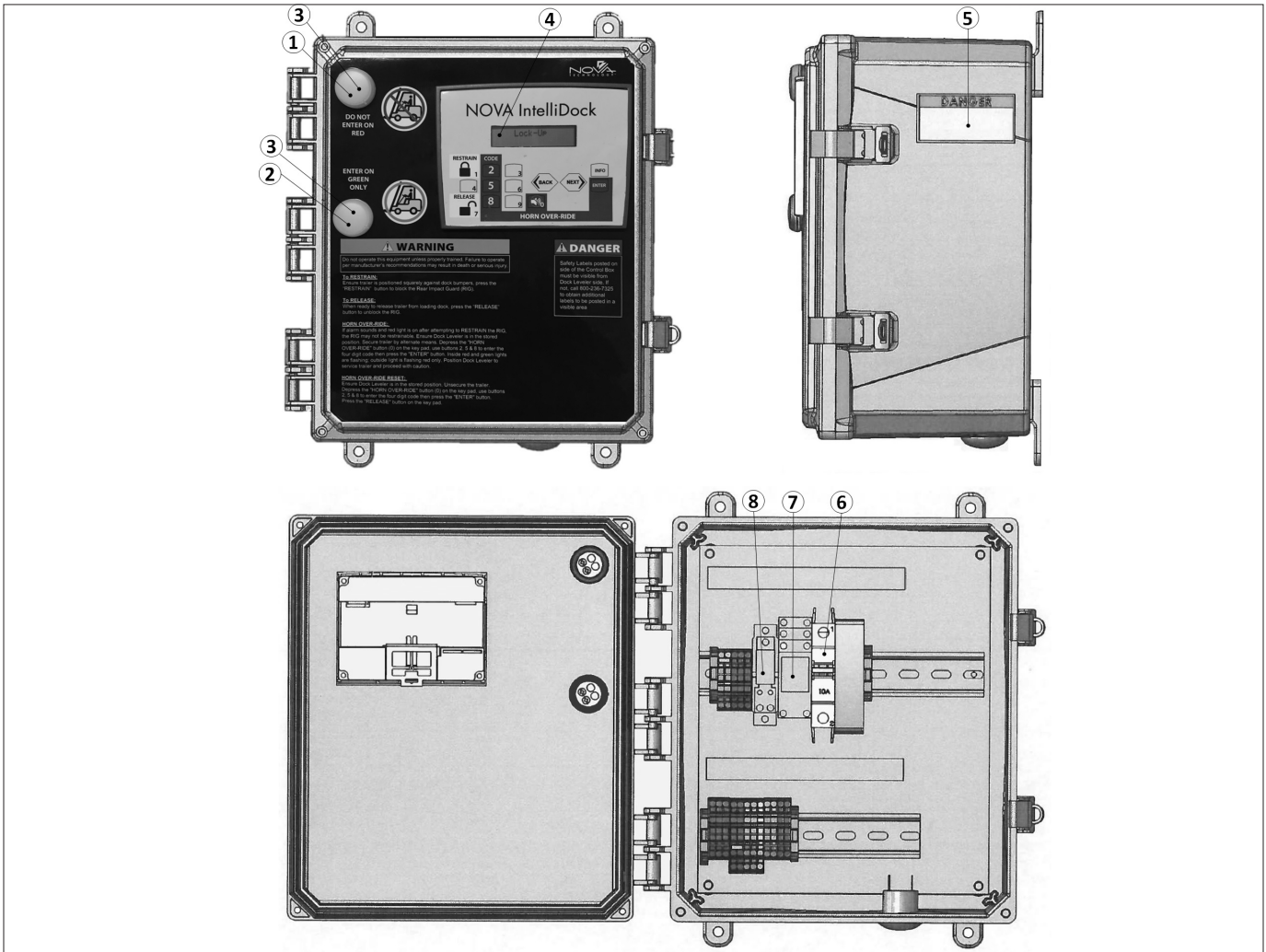


FIGURE Q—CONTROL BOX PARTS

CONTROL BOX REPLACEMENT PART LIST

ITEM NO.	PART NUMBER	DESCRIPTION	QTY.
1	CB-1000	RED PILOT LIGHT 24VDC LED	1
2	CB-1001	GREEN PILOT LIGHT 24VDC LED	1
3	CB-1002	WHITE LED COVER	2
4	CB-PLC-01	PLC - STANDARD	1
5	MF2-202-000	ARC FLASH LABEL	1
6	CB-1003	CIRCUIT BREAKER	1
7	CB-1004	12 AMP RELAY	1
8	CB-1005	20 AMP RELAY	1

For replacement parts, contact NOVA Technology.

This page intentionally left blank

WARRANTY

NOVA TECHNOLOGY INTERNATIONAL, LLC warrants that its products will be free from defects in design, materials and workmanship for a period of one (1) year from the date of shipment. All claims for breach of this warranty must be made within 30 days after the defect is or can with reasonable care, be detected. In no event shall any claim be made more than 30 days after this warranty has expired. In order to be entitled to the benefits of this warranty, the product must have been properly installed, maintained and operated in accordance with all manufacturer's recommendations and/or specified design parameters and not otherwise have been subject to abuse, misuse, misapplication, acts of nature, overloading, unauthorized repair or modification, application in a corrosive environment or lack of maintenance. Periodic lubrication, adjustment and inspection in accordance with all manufacturers' recommendations are the sole responsibility of the Owner/User.

In the event of a defect, as determined by NOVA TECHNOLOGY INTERNATIONAL, LLC, covered by this warranty, NOVA TECHNOLOGY INTERNATIONAL, LLC shall remedy such defect by repairing or replacing any defective equipment or parts, bearing the cost for the parts, labor and transportation. This shall be exclusive remedy for all claims whether based on contract, negligence or strict liability.

PRODUCT SPECIFIC WARRANTY LOCK-UP VEHICLE RESTRAINT

In addition to the "Standard Product Warranty" provided with all Nova Products, NOVA TECHNOLOGY INTERNATIONAL, LLC guarantees materials, components and workmanship to be free of defects for the following extended periods:

- Extended 2-Year General Warranty—for a period of two (2) years from date of shipment, this warranty specifically applies to; the roller track assembly, carriage assembly, RIG sensor assembly and control box only.
- Extended 5-Year Structural Warranty—for a period of five (5) years from date of shipment, product will carry a prorated structural warranty. This warranty specifically applies to; the roller track, carriage weldment, motor/chain cover, barrier assembly and lower spring bar only.

NOT COVERED UNDER WARRANTY

- Routine maintenance, lubrication, adjustments, including initial field set-up.
- Repairs required as a result of failure to follow routine maintenance procedures specified in the owner's manual, abuse, accident, willful damage, neglect, improper installation, submersion, or shipping damage.

WARRANTY LIMITATIONS

THE ABOVE WARRANTIES ARE IN LIEU OF ANY OTHER WARRANTIES, WHETHER EXPRESSED OR IMPLIED, INCLUDING BUT NOT LIMITED TO ANY IMPLIED WARRANTY OF MERCHANTABILITY OR FITNESS FOR A PARTICULAR PURPOSE. NOVA TECHNOLOGY INTERNATIONAL, LLC AND ITS SUBSIDIARIES SHALL NOT IN ANY EVENT BE LIABLE TO ANYONE, INCLUDING THIRD PARTIES, FOR INCIDENTAL, CONSEQUENTIAL OR SPECIAL DAMAGES OF ANY KIND INCLUDING BUT NOT LIMITED TO, BREACH OF WARRANTY, LOSS OF USE, LOSS OF PROFIT, INTERRUPTION OF BUSINESS OR LOSS OF GOODWILL.



N90W14507 Commerce Drive Menomonee Falls, WI 53051
Phone 262-502-1591 | 800-236-7325 | fax 262-502-1511
www.novalocks.com