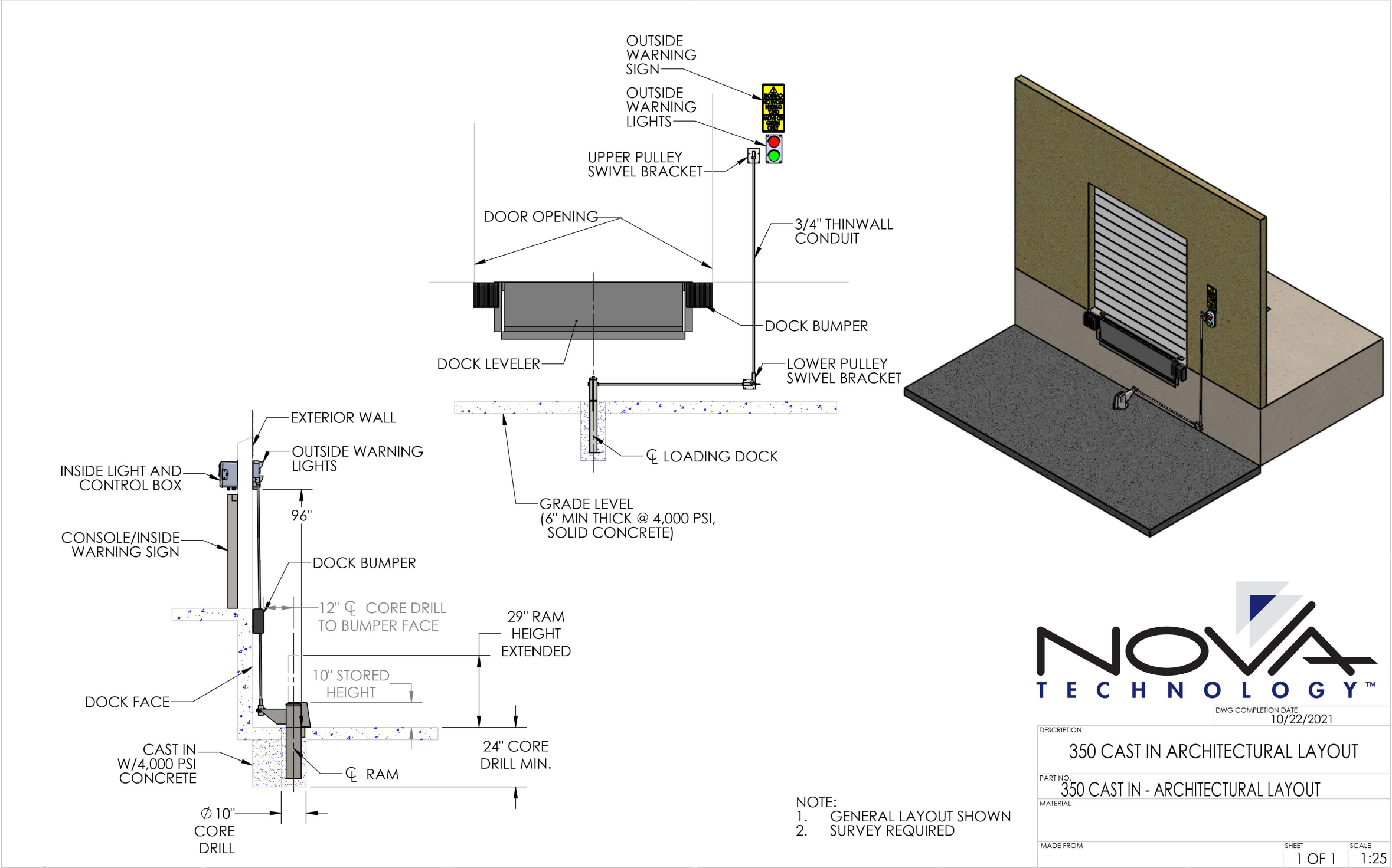


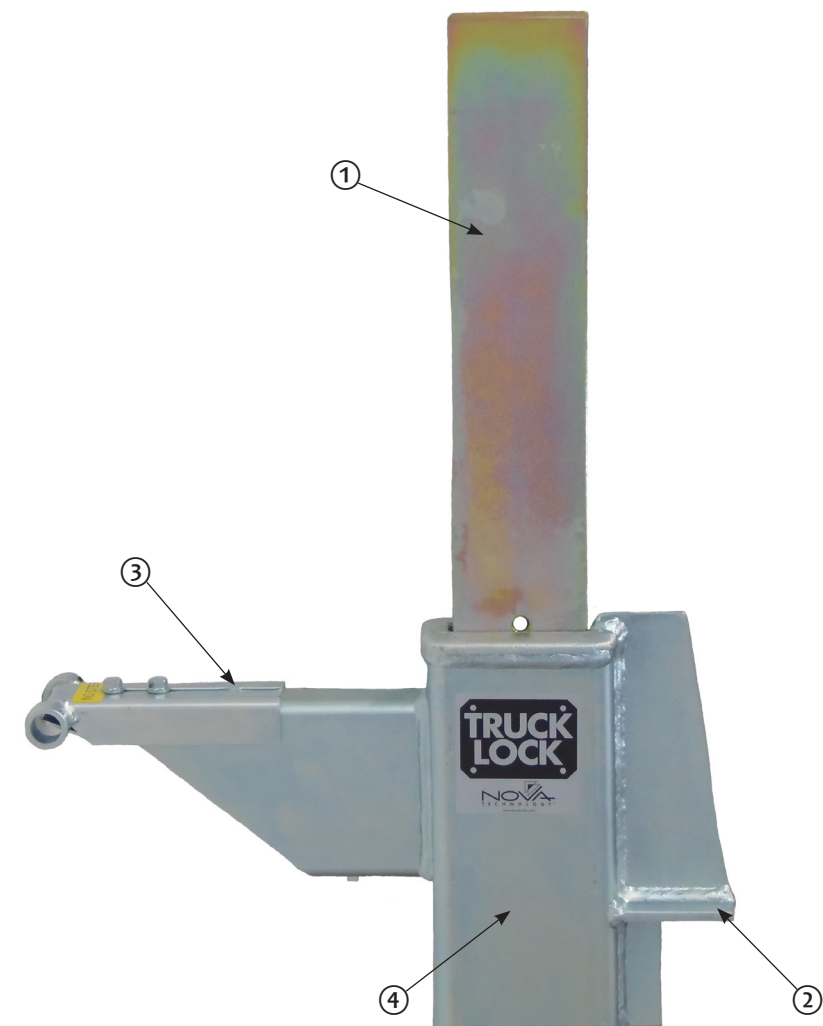
# NOVA TRUCK LOCK™ 350 SERIES — CAST-IN STYLE

ARCHITECTURAL DRAWING



# NOVA TRUCK LOCK™

350 SERIES — CAST-IN STYLE



1 — RAM BAR  
2 — SMALL FOOTPRINT

3 — EXTENSION BRACKET  
4 — ZINC PLATING


## STANDARD FEATURES

- ☒ Lifetime warranty
- ☒ 10-inch retracted height
- ☒ Non-impact design
- ☒ Versatility in handling a larger variety of trucks
- ☒ Manual or powered versions
- ☒ LED inside and outside light communication package
- ☒ Withstands over 30,000-pounds of pull-away force
- ☒ Ram bar yield strength of 100,000 PSI
- ☒ Corrosion-resistant zinc plating
- ☒ All activation components mounted inside the building
- ☒ Low-maintenance design with very few moving parts
- ☒ Installs at nontraditional dock types
- ☒ Small footprint

## OPTIONAL FEATURES

- ☐ Compressor/wall bracket
- ☐ Truck sensor
- ☐ Interlock with leveler or door
- ☐ Open dock stanchion
- ☐ Metal building mount kit
- ☐ Swivel brackets for unique applications
- ☐ Rebar Installation Kit for asphalt or non-concrete approach applications (cast-in style housing only)
- ☐ IntelliDock Combination control box (powered versions only)



 **WARNING:** Cancer and Reproductive Harm-[www.P65Warnings.ca.gov](http://www.P65Warnings.ca.gov)